

The Legacy

Mt. Pleasant Area
community foundationSM

2009-2010 Newsletter/Annual Report

Hersee House Grand Opening



2010 will be remembered for many milestones achieved by the Mt. Pleasant Area Community Foundation. Over the past several months the nonprofit organization has been renovating its new office space located at 306 S. University Avenue, locally known as the Hersee House. Idonea "Dony" Hersee chose to leave her legacy in the community by generously donating her home and adjoining office space where her husband W. E. Hersee practiced medicine, to the Community Foundation. This new location will provide MPACF with a permanent home to better serve the community.

As part of the renovation project, the MPACF Board of Trustees invites community members to order personalized bricks to be installed in the "For Good. For ever. Walkway." This is a fun way to support the Community Foundation, and records your gift for all visitors to see for many generations to come. Visit the MPACF website at www.mpacf.org to learn more.

*Mt. Pleasant Area Community Foundation
Celebrates 20th Anniversary*

The Mt. Pleasant Area Community Foundation is excited and proud to be celebrating its 20th Anniversary. Since 1990, MPACF has helped thousands put their financial resources to work to help others. We know the needs of our community and the most effective programs and organizations that serve those needs. "Philanthropy has been and continues to be a priority for both families and businesses in our community," notes Executive Director Amanda Schafer. "Through the foresight and generosity of community members, the Mt. Pleasant Area

The Mt. Pleasant Area Community Foundation Board of Trustees invites all community members to join us in celebrating 20 years of service to Isabella County and the grand opening of the Hersee House office on November 11, 2010 from 3-7 pm. A ribbon cutting ceremony and brief remarks will take place at 4 pm.

Community Foundation has been able to award more than 1,200 grants totaling more than \$2.5 million."

We thank the community for its support these last 20 years, and look forward to further enhancing the quality of life for citizens of Isabella County.

Legacy

A Gift Today...A Legacy Forever

Our mission is to enhance the quality of life for all citizens of Isabella County, now and for generations to come, by holding and attracting permanent endowed funds from a wide range of donors, addressing needs through grant making and providing leadership on key community issues.

President’s Greeting

In reflecting on the past twenty years, I am reminded of the incredible generosity of those who have supported the Mt. Pleasant Area Community Foundation. As its President, I am proud of our past and the impact of our grant making efforts since 1990. Like so many of you, I am passionate about our future as a community. I believe the Community Foundation will play an increasingly important role in this future—as a steward of the resources entrusted to us, a funder of charitable initiatives, and a convener of community leaders to focus on the issues of greatest importance to our community.

On behalf of the Mt. Pleasant Area Community Foundation Board of Trustees, I invite you to view this 2009-2010 Annual Report and the stories of twenty new funds begun in this, our twentieth year. With nearly 200 endowments, our Community Foundation continues to grow in asset size and therefore, our ability to improve the lives of those in our community. Our Community Foundation has become a focus of philanthropy--investing our energy and financial resources to create and maintain our vibrant community. Please take a moment to learn more about our Community Foundation and our collective work to achieve the very best for the residents of Isabella County!

-Steve Martineau

www.mpacf.org



Mt. Pleasant Area community foundationSM

2009-2010 Newsletter/Annual Report

In this Report...

About the Mt. Pleasant Area Community Foundation	6-7
MPACF Board of Trustees, Committees, and Staff	8-9
2009 Financial Report	12
Dension Legacy Society	15
Youth Advisory Committee	16-17
Scholarship Recipients	18-19
2009 Donors to the Foundation	24-26
Funds of the Foundation	27-28
Womens Initiative	29
Grants Awarded by MPACF	30-31
New Fund Articles	4-5,8,10-14,20-23

www.mpacf.org

A Tribute to Mary Ellen Brandell



Dr. Mary Ellen Brandell, 76, passed away September 24, 2010. Mary Ellen represented the heart and spirit of the Isabella County community. We were fortunate to know such a gifted leader, volunteer, educator, and philanthropist.

She and her husband raised seven children in our community, all while setting an example of servant leadership. The Mt. Pleasant Area Community Foundation has benefitted from her innovative leadership, dedication to community, and significant efforts to advance the common good through community collaboration.

Not only did Mary Ellen serve on our Board of Trustees for more than four years, but she also was an integral part of the success to expand and enhance recreation opportunities for citizens of all abilities through Access to Recreation. As the Committee Chair, she was a vital part of efforts to construct an Access Adventure Trail which runs through Chipp-A-Waters Park. She also created an endowed fund within the Foundation to support Access to Recreation.

Mary Ellen also began two other endowed funds within the Foundation. She created the Richard Brandell and Joseph Sweeney Recreation Fund, in honor of her husband and father. This fund supports the Cultural and Recreational Commission of Isabella County—Morey Courts Recreation Center after school fitness program; which utilizes leadership development and health education to improve youth fitness and enhance self-esteem. Mary Ellen also established the Dick and Mary Ellen Brandell Hospice House Fund to support the local hospice house.

Mary Ellen's leadership and service extended far greater than the Community Foundation. She served as Vice-Mayor of Mt. Pleasant, Dean and Vice-Provost of Central Michigan University, and member or director of a score of committees and charities, most recently with the Isabella County Sesquicentennial Committee, and Woodland Hospice. Mary Ellen was also a key contributor to the Elizabeth Hursch Story, the history of the first permanent settler in Mt. Pleasant.

Mary Ellen served as the inspiration behind many projects over the last four decades including the Volunteer Center at CMU and a founding gubernatorial appointee of the Michigan Community Service Commission. Additionally, she and her husband Dick started and managed Allied Health Services, a local communication disorders therapy practice.

Dr. Brandell's greatest impacts on our community are a result of her constant mentorship of friends and family. She was a selfless volunteer who shared her civic mindedness and humble nature with all who crossed her path. She was a dedicated wife, mother, grandmother, professor, dean, and author.

It was a true pleasure to know and be inspired by Dr. Mary Ellen Brandell. She was an incredible asset to the Foundation and the Mt. Pleasant Community, helping us to enhance the quality of life for all citizens of Isabella County, now and for generations to come.



Access to Recreation Initiative

The Access to Recreation initiative has resulted in several endowed funds to enhance opportunities for citizens of all ages and abilities. Advisory Board Chair Mary Ellen Brandell explained, "The concept of Access to Recreation is to expand recreational opportunities to all persons of special needs and their families. This applies to the design as well as the quality of the experience."

In collaboration with the City of Mt. Pleasant, the initiative resulted in the opening of the Access Adventure Trail connecting Chipp-A-Waters Park to Vites Woods in June, 2010. Support from the W. K. Kellogg Foundation included trail funding, as well as \$120,000 to match support for Access to Recreation endowments. To maintain the trail, and to finance future accessibility projects, more than \$243,000 total has been endowed with the Foundation. The Access to Recreation Advisory Board will review applications and make recommendations to the Foundation Board of Trustees about annual grantmaking from these funds.

Janet Maar Strickler Access to Recreation Fund

Janet Maar Strickler established an Access to Recreation Fund because she sees the significance of accessibility to the Isabella County community. Jan believes everyone should have the opportunity to find a recreational activity that gives them joy. "I hope that the money in this fund, along with the matching funds from the Kellogg Foundation, can be used to further create recreational opportunities that will give access to all members of our community," Jan explained. "I hope this fund will be used to further options that exist today and possibly create new opportunities," she said. "I am very proud to support Access to Recreation!"

Mt. Pleasant Rotary Club Access to Recreation Fund

Rotary International is a worldwide organization of locally based clubs whose members help support good causes and the disadvantaged. The Mt. Pleasant Rotary Club is celebrating its 85th anniversary in 2010, and is a friendly group of 60 community members committed to helping those in need and to improving local facilities. Establishing an Access to Recreation Fund within the Foundation was therefore a natural fit for the Mt. Pleasant Rotary Club. Rotary members were active in supporting the Access Adventure Trail, and see the endowed fund as a way to remain connected to the project and to financially support future universal accessibility projects in Isabella County.

www.mpacf.org



Angel Wings Fund

When Keisha Brown was diagnosed with breast cancer on June 29, 2007 she had many thoughts running through her mind. Her biggest fear was what was going to happen to her one year-old daughter, Angel. This is what led Keisha to later create the Angel Wings Fund, named after her daughter.

Since Keisha had assistance from her friends and family during her battle with cancer, she did not have to worry if Angel was being taken care of. This is something that she would like to provide for other children in Angel's situation.

"There are many men and woman who are affected by cancer. There are many men and women doing research to find a cure. But what about the children, those who are not diagnosed with cancer, but lose a parent because of it? Those are the ones we are overlooking. Those are the children Angel Wings will help to fly," Keisha said.

The Angel Wings Fund is designed to help children whose parent has passed away due to cancer in the form of a college scholarship. It is also hoped that this will lessen the burden placed on the surviving parent.



Another mission of the Angel Wings fund is to bring cancer education events to schools, making children aware of the many types of cancer at any early age. These events can range from health fairs to motivational speakers.

To raise money for the Angel Wings Fund, Keisha will host an annual fall gala. This year's gala will take place on November 20th, at Buck's Run Golf Club. "Although the focus of the event is to recognize people battling cancer, it will also be a celebration of life," Keisha said, "and anyone in the community can attend." She wants to give people affected by cancer a chance to dress up and go out, because often, she says, "their lives are consumed by the disease itself." For more information about the gala, or to purchase tickets, contact Keisha Brown at (989) 775-6992 or by email at: angelwingsfund@gmail.com.

Brewster Family Access to Recreation Fund

As a swimmer, diver, field hockey, tennis player and physical education major at CMU (then Central Michigan Teacher's College), our mother, Esther Trussell Brewster, understood and valued the importance of recreation in the lives of both young people and adults. Our father, Jack Brewster, was a fine athlete as a young man and a dedicated Little League, Pony League and Colt League baseball coach when brother, Jack, was growing up and for some years after.

We were an active family. Our parents encouraged - even required - that we get out and move. There were no public busses or a family car furnished to get us to the Island Park pool or skating rink. We walked or rode our bikes into town from our East Broadway home. If there had been a hockey rink or bike paths available to us, we would have been eager users of such facilities. These lessons were well learned as each of us continues to be active into our mature years. One sister has been a world class skier, another a senior Olympian, another a champion trail runner, the fourth an accomplished horsewoman and our brother a fine golfer. Our children continue in this tradition, several of them notable athletes in their own

fields. Recreation and activity rule in our homes in equal importance with work.

The intention for the creation of the Brewster Family Fund is to support, at some level, efforts to furnish recreational opportunities to the residents of our home town. At a time when fitness for health and awareness of the environment are of even greater importance than ever to the sustenance of our society, the Mt. Pleasant Area Community Foundation is the perfect vehicle for this effort and is doing a terrific job in fulfilling this goal.

It would be gratifying if like minded individuals would contribute to this fund, either as a tribute to the man and woman to whom it is dedicated, or as a validation of the ever growing need for people to have access to the outdoors and other recreational venues. It is our family's sincere hope that the Foundation will continue to utilize the Brewster Family fund to promote such efforts and expand the fine facilities already constructed.

by Diane Tope, Jack and Esther Brewster's daughter

What is the Mt. Pleasant Area Community Foundation?

The Mt. Pleasant Area Community Foundation (MPACF) is a tax-exempt public charity that serves as the center of philanthropy in Isabella County. The Foundation gives people and businesses in the community the opportunity to make contributions to various funds and causes. Those considering charitable giving may establish their own charitable fund or contribute to an existing fund. These professionally managed funds are permanently endowed, which means the contributions are never spent. The assets of the Foundation's more than 200 funds are combined for investment purposes, and the earnings from investments are used to award grants and scholarships. Annually earnings benefit various humanitarian, educational, recreational, environmental, and cultural organizations that provide services to Isabella County residents. Currently, MPACF is overseen by exceptional community leaders that make up the 24 member Board of Trustees.

Why choose the MPACF?

Flexibility

The Mt. Pleasant Area Community Foundation allows you to target your gift to support any of our community's charitable organizations or causes. Your gift will be permanently endowed and will continue to support your chosen organization or cause forever.

Superior tax benefits

Your contributions are eligible for the highest combination of Federal and State tax incentives. The state of Michigan encourages contributions to permanently endowed funds of community foundations by offering a Michigan Community Foundation Tax Credit.

How May I Give?

Manage your charitable giving through the Mt. Pleasant Area Community Foundation and support the organizations and issues that mean the most to you. Your impact will be immediate and long lasting.

Contribute to an existing fund

Browse our existing funds at www.mpacf.org to find a charitable cause or organization that reflects your charitable interests. By making a gift to one or more of our existing funds:

- You can benefit the entire spectrum of charitable services that enrich our community with an unrestricted fund.
- You can support a field of interest fund by donating to a specific area of community life such as children and youth, the elderly, literacy, recreation, the arts, or emergency needs.
- You can support a favorite charitable organization in our community, including schools and units of government. Benefit organizations include Commission on Aging, Central Michigan Chapter of the American Red Cross, Art Reach, Hospice, Central Michigan Community Hospital, Isabella Community Food Pantry, Community Cancer Services, Mt. Pleasant Public Schools and many more.
- You can help the students of our community pursue their educational goals through a scholarship fund.

Choose to create your own fund

A personalized fund may be created in memory or honor of a loved one, in your family's name, or in the name of your organization or business. Your own fund may be established to support the cause or organization of your choice in the community. When establishing a fund, you may specify that your fund be "Donor Advised", so that you and your family can stay involved in the process of awarding grants.

What May I Give?

The Mt. Pleasant Area Community Foundation accepts a variety of giving instruments tailored to your unique situation.

Outright Gift

You may make a gift of cash, stocks, bonds, real estate, or other assets.

Bequest by Will

You may designate a gift or portion of your estate to be placed in a charitable fund you have selected or created in the Mt. Pleasant Area Community Foundation and, in some cases, receive a substantial reduction in federal gift and estate taxes.

Charitable Remainder Trust

Placing cash or property in a Charitable Remainder Trust will pay an annual income to you (or another named beneficiary) for life. You can arrange, after your death to have the remainder of your trust transferred to the Foundation and placed in a charitable fund you have selected or created.

Charitable Lead Trust

A "Lead" trust is the opposite of a "Remainder" trust. Placing cash or property in a Charitable Lead Trust will pay an annual income to a charitable fund you have selected or established with the Foundation. After your death, or a set period of time, the remainder of your trust will be transferred to you or another named beneficiary.

Charitable Gift Annuity

A charitable gift annuity is a way to make a generous gift to your community while providing yourself with a new income source you can count on for the rest of your life.

How Much is Required to Give?

Contributing to an Existing Fund

Gifts in any amount are accepted for the Foundation's existing funds, and are eligible to receive federal and state tax benefits. Contributions made to endowed funds are never spent, but combined with other donations to provide grants by using the return on the investments.

Creating Your Own Fund

Creating your own personalized fund requires a minimum starting contribution of \$500, with a plan to reach \$10,000 within ten years. When your fund matures to \$10,000, it will then be eligible to make grants and scholarships.

How Do I Get Started?

Contact MPACF for help with creating a fund or deciding which grant making program fits your needs and carries out your charitable wishes.

Learn More

Visit our website at www.mpacf.org for a complete list of charitable funds, grant and scholarship seeking information, special initiatives, and much more.

CONTACT:

Mt. Pleasant Area Community Foundation

PHONE: 989.773.7322

E-MAIL: info@mpacf.org

MAIL: PO BOX 1283, Mt. Pleasant, MI 48804

Committees of the Foundation

Executive Committee:

Steve Martineau, President
Nancy Ridley, Vice President
Jan Strickler, Secretary and Development Chair
Dan Boge, Treasurer
Bob Wheeler, Past President
Laura Richards, Grant Review Chair
Dyke Heinze, Youth Advisory Committee Advisor
Eric Janes, Nominating/Bylaws Chair
Steve Pung, Scholarship Chair
Don Schuster, Community Relations Chair

Nominating/Bylaws Committee:

Eric Janes, Chair
Dan Boge
Doug Dodge
George Dunn
Nancy Ridley

Finance Committee:

Dan Boge, Chair
Jill Bourland
Mary Ann Breuer
Tim Coscarelly
Randy Dickinson
Tim Driessnack
Debra Lehmann
Nancy Ridley
Tom Sullivan
Terrie Zitzelsberger

Development Committee:

Jan Strickler, Chair
Joneil Cook
John Jensen
Steve Martineau
Dianne Morey
Stan Rathbun
Don Schuster
Judy Smith
Sally Weisenburger

Grant Review Committee:

Laura Richards, Chair
Doug Dodge
Joanne Golden
Chuck Hubscher
Dave Keilitz
Doris Lucas
Joan McDonald
Rick McGuirk
Harold Stegman
Betty Wagner

Community Relations Committee:

Don Schuster, Chair
Carolyn Bennett
Ann Brockman
Judy Chipman
Shelly Hinck
Al Kaufmann
Sally Weisenburger

Scholarship Committee:

Steve Pung, Chair
Frank Andera
Mary Jo Andera
Frank Boles
Valerie Boles
Jill Bourland
Mary Ann Breuer
Ann Brockman
Krystal Campbell
Lisa Castle
W. Larry Collins
Shirley Martin Decker
Jena Eisenberger
Cheryl Gaudard
Joyce Gluch
Heather Graham
Heather Harris
Phyllis Heinze
Mary Ellen Janes
John Jensen
Janet Kline
Connie McCann
Carole Merwin
Kathy Methner
Verna Nolan
Mary Olivieri
Pauline Pasch
Sue Pung
George Rouman
Robert Rulong
Jeff Schaeffer
Kyle Schafer
Jim Shoemaker Jr.
Nolan Stilgenbauer
J.B. Walden
Annette Welsh
Helene Zimmerman
Terrie Zitzelsberger

Access to Recreation Advisory Committee:

Mary Ellen Brandell, Chair
Russ Alwood
Kathy Beebe
Chris Bundy
Pat Daniels
Al Kaufmann
Sue Ann Kopmeyer
David Ling
Carol Moody
Mary Lou Schilling
Nick Williams

Shepherd Community Fund Committee:

Terry Baker
Don Brown
Doug Bush
Doug Dodge
Kathy Edwards
Mary Foote
Joyce Gluch
John Lauffer
Jack Nartker
Dennis Oyster
Kent Roth
David Smith
Harold Stegman
Roger Trudell
John Williams

Hersee House Committee:

Bob Long, Chair
Deb Gascho
Sandy and Dennis Olson
Steve Pung
Laura Richards
Judy French Smith

www.mpacf.org

Isabella County Fire Chiefs Association Fund

The Isabella County Fire Chiefs Association Fund was created by Alan and Kathy Johns in December 2009 to support first responders in Isabella County. The purpose of the Fund is to facilitate the development of cooperative efforts in first responder education, fire prevention, public safety education, emergency care, hazardous material safety, and other areas related to the many fire departments that serve Isabella County.

Alan and Kathy Johns' roots go very deep in the Mt. Pleasant Community. Both are lifelong residents and have volunteered for various Isabella County organizations over the years. In 1999, Alan became a volunteer firefighter with the Deerfield Township Fire Department. Currently, Alan serves as a medical first responder with Fremont Rescue.

During his time as volunteer firefighter, Alan made many good friends and wanted a

method to give back to all fire departments that serve the residents

of Isabella County. The result was the Isabella County Fire Chiefs Association Fund. The Isabella County Fire Chiefs Association is a board comprised of fire chiefs from every fire department that serve county residents; the board collectively makes decisions.

Alan and Kathy admire the dedication of this group of volunteer firefighters and medical first responders. They always have pagers on and will drop everything with no thanks expected. Alan describes his experience as a volunteer as "self-gratifying."

The Isabella County Fire Chiefs Association Fund will help better train and equip volunteers. It takes a lot for someone to dial 911: "No one ever wants to make the call, but when you do call, they're always there. This Fund will help better prepare the people that show up at the door," said Johns.



Board of Trustees



Steve Martineau
President



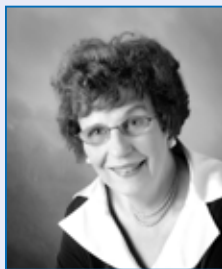
Nancy Ridley
Vice President



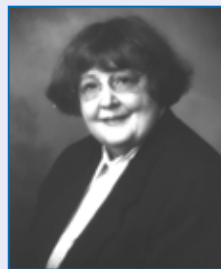
Dan Boge
Treasurer



Jan Strickler
Secretary



Mary Ellen Brandell
Trustee



Mary Ann Breuer
Trustee



Shirley Martin Decker
Trustee



Doug Dodge
Trustee



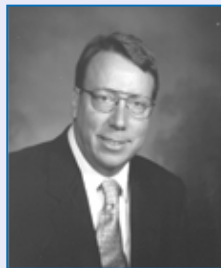
George Dunn
Trustee



Joanne Golden
Trustee



Dyke Heinze
Trustee



Chuck Hubscher
Trustee



Eric Janes
Trustee



Dave Keilitz
Trustee



Bob Long
Trustee



Dianne Morey
Trustee



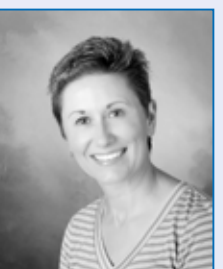
Lon Morey
Trustee



Darcy Orlik
Trustee



Steven Pung
Trustee



Laura Richards
Trustee



Don Schuster
Trustee



Tom Sullivan
Trustee



Bob Wheeler
Trustee



Terri Zitzelsberger
Trustee

Staff



Amanda Schafer
Executive Director



Nancy Wheeler
Administrative Assistant



Samantha Todd
Administrative Intern



Riki Dugenske
Public Relations Intern



Chelsea Strzelecki
Public Relations Intern

Ridley Leadership Fund

Tom and Nancy Ridley created the Ridley Leadership Fund to ensure lasting support to the administrative needs of the Mt. Pleasant Area Community Foundation. The Ridleys knew that if the administrative costs were supported, it would in turn support every aspect of the Foundation's mission. Creating an endowment that provided on-going funding to the administrative support seemed like a great way to assist the community, so that MPACF would never have to worry about administrative costs, and could focus on granting and supporting local charities.

"The grant making that the Foundation does is important to our entire community, but the Foundation cannot complete its mission if it is not adequately funded to support the very lean administrative costs of the organization," said Nancy Ridley.

The Ridley's felt a need to support the community that their family calls home and wanted their children, Collin, 15, and Mitch, 13, to understand the importance of supporting their community both financially and personally. Collin has followed in his parents' footsteps and is supporting the Foundation by serving on the Youth Advisory Council.



Tom and Nancy hope this fund will help the Foundation meet its administrative needs so that its staff can focus its time and energy on meeting the greater needs of the community through obtaining donations and granting those donations, instead of having to worry about paying for the administrative costs each year.



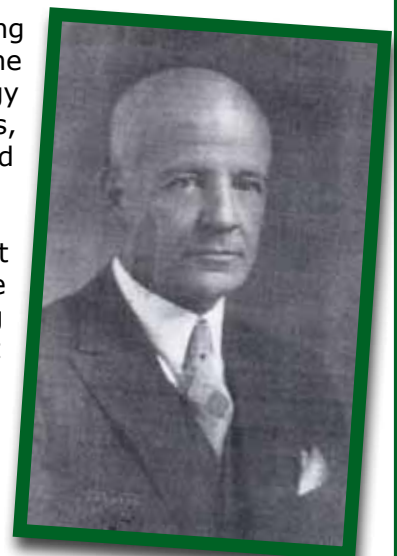
Ganiard History Project Scholarship Fund

The Ganiard History Project is an ongoing, living history project that crosses generations and was started by Ganiard Elementary first grade teacher, Val Wolters. Val began the Ganiard History Project after teaching at the elementary school for 23 years. After conducting some research, Val fell in love with the photographs, maps, drawings, and personal stories that pieced together the puzzle that was the history of Ganiard Elementary.

"Learning is meant to be shared," says Wolters. She started the Ganiard History Club with 3rd and 4th graders, and there are currently 134 students in the club! The students work with local authors, Jack Westbrook and Loren Anderson, photographer Rachel Foster-Lifson, art teacher True Muszynski, and numerous other volunteers to produce great projects that help preserve the history of Ganiard Elementary. Some of the projects the students have created include: an award-winning Lego replica of the old school; a showcase for a donated Statue of Liberty; as well as photographs, notes, drawings, and paintings

of the school. An amazing amount of research was done with help from technology specialists, teachers, parents, friends, CMU students, and former Ganiard personnel.

The Ganiard History Project Scholarship Fund shall provide scholarships to graduating seniors from Mt. Pleasant High School, who attended Ganiard Elementary School as children, so that they may advance their education at an accredited college, university or trade school.



www.mpacf.org

Joe and Jeanne *Epple Family Fund*

The Epple family has a true love for baseball, and it shows. All five of the Epple children have participated in the sport, and have inspired their children to play, too. To keep their love of Mt. Pleasant area baseball growing, they have established the Joe and Jeanne Epple Family Fund. "Dad was worried that after he was gone, the baseball facilities would go downhill and wanted to make sure that the program was taken care of," said Luke Epple.

Joe Epple played baseball all the way through the collegiate level, at Central Michigan University. After his four years of playing he decided to stay and join the graduate program and be the assistant coach for the team. This is where he met his future wife, Jeanne.

Joe and Jeanne started their family in Mt. Pleasant. Joe worked as a teacher for Mt. Pleasant High School and was the head coach of their baseball team. Through his 34 years in various coaching positions with the Mt. Pleasant High School Baseball team, he touched the lives of many children and was a mentor and fatherly figure to them all. When the baseball facilities at the schools needed something, the Epple's were there to help, financially or otherwise.

While Joe was teaching and coaching, Jeanne Epple was shuttling their five children to their sports practices



and making sure that things at home were taken care of. She went to work in the office for Mt. Pleasant Schools when their oldest son Luke was sixteen, but she was still at all the kid's games. "I was always the cheerleader in the stands," Jeanne said.

The Joe and Jeanne Epple Family Fund will be used to ensure that Joe's hardwork and dedication to the baseball program of Mt. Pleasant will be everlasting. The money from the fund will help to support the sport's facilities or any other expenses that may arise. Joe Epple will forever be remember as a coach, father and mentor to all.

John and Sue Bradac *Family Emergency Fund*

The purpose of the John and Sue Bradac Family Emergency Fund is to provide financial support for the unforeseen or unbudgeted emergency repair or replacement needs of Isabella County non-profit organizations. The repair or replacement needs must relate to items or infrastructure failures that present an immediate threat to the ability of an organization to continue to operate and provide core services to our community.

As long time residents of Mt. Pleasant and former members of so many community service organizations, the Bradacs understand what it's like for non-profits to have to work with very tight budgets. Mr. Bradac said, "All is going well until the copier breaks, or the furnace needs major repairs or replacement, or the roof starts to leak, and then they can't afford to get it fixed. You have to scramble to figure out creative financing to pay for the repairs. Just like at home, when something like this happens unexpectedly, you scramble to find the money to repair it. That is where this fund can help."



Mr. Bradac continued, "I look at this fund as a rainy day account. When the organization is about to take a hard financial hit due to lack of repair funds, Sue and I would like to give them a helping hand."

2009 Financial Report

Assets:

	12/31/2008	12/31/2009
Cash	\$853,066	\$740,779
Beneficial interest in charitable lead annuity trust and unitrust	\$548,261	\$828,425
Investments	\$4,749,628	\$6,463,133
Pledges Receivable	\$1,104,898	\$117,192
Student Loans Receivable	\$104,871	\$95,934
Deferred Gifts	\$10,854	\$15,120
Land, buildings, and equipment	\$226,525	\$197,039
Total Assets	\$6,610,397	\$8,445,418

Liabilities:

Grants Payable	\$21,759	\$12,984
Amount Held on Behalf of Others	\$25,461	\$0
Organization Endowments	\$1,160,231	\$1,483,933
Total Liabilities	\$1,207,451	\$1,496,917

Net Assets

Unrestricted	\$1,271,013	\$6,015,088
Temporarily Restricted	\$4,131,933	\$933,413
Total Net Assets	\$5,402,946	\$6,948,501

Total Liabilities and Net Assets	\$6,610,397	\$8,445,418
-----------------------------------------	--------------------	--------------------

www.mpacf.org

Goenner Family Scholarship Fund

Roger and Alice Goenner started the Goenner Family Scholarship Fund in the hopes it would give their entire family a place to invest in the community where they grew up. With six children and 18 grandchildren, they wanted to create a consolidation point for all of their family's giving.

The Goenners have lived in the Mt. Pleasant area since 1958 and believe in the community and MPACF. They decided to create a scholarship fund because they truly understand the value of education, as they both taught in the area. Roger was a professor of school administration at Central Michigan University for 30



years and Alice taught math, and coached basketball and track, at Mt. Pleasant Public Schools.

The Goenners have decided to focus their scholarship on deserving high school students from Sacred Heart Academy, where all of their children attended. They hope to give students the opportunity to grow and further their education at a collegiate level.

Gifts Received in 2009 in Honor of:

Beal City Rocket Football Coaches and Volunteers:

Stephanie Mathews, Tony Clouse, Nick Whitehead, Thad Wilson, Todd Schafer, Mick P. Natzel, Kegan Rojas, Nate Belinger, Rod Flaughter, David Miles, Kevin Yuncker, Jared Moore, Sean Moore, Mick Straus, Sid Tilmann, Bill, Don Huber, Rich Hahn, Brian Straus, Geno Tillman, Jake Hahn, Mick Natzel Sr., Mick Natzel Jr., Dave Zeien, Jim Faber, Ryan Fussman, Erick Straus, Shawn Reeves, Nick Reeves

Matthew Bohrer
The Boles Family
The Brandell Family
Ann Brockman
Ellis Brockman
Carol Churchill
Lillian M. Collins

W. Larry Collins
Shirley Decker
Coach Herb Deromedi
Deborah Dorn
Betty Eckersley
Laura Faber
Lee Fabiano
Louise Fredricks
Amy Gaudard
Carrie Gaudard
Nilah Gaudard
Sally Goodrow
Alison Green
Dyke Heinze
Dorothy Horan
Paul Janes
John and Ann Jensen
Julia Hartman Klein
Coach Roy Kramer
Phil and Nancy Langlois
Rebecca Mayhew
Bryan and Deb Mielke

Jane Mills
Robert and Marge Mills
MPHS Class of 1959
Mt. Pleasant Rocket Football Coaches and Volunteers:
Al Zainea, Bob Backus, Bob Zurawski, Brian Mitchell, Calvin Seelye, Dave Blackburn, David Durfee, Doug Phillips, Earl Ingram, Edward Wentworth Jr., Eric Skowronski, Frank Lynch, Gary Leasher, Greg Gillespie, Gregory Starry, Hunter Genia, Jason Robinson, Jim Ferguson, Joe Byrne, Joe Fleming, John Belco, John McCann, Joseph Hudson, Keith MacDonald, Kyle Gross, Len Klakulak, Mark Arends, Michael Ervin, Michael Fitzpatrick, Michael Pung, Mike Woodworth, Nick Phillips, Nick Wegehaupt, Rick Parker, Rick Pearen, Ronnie Ekdahl, Ryan Schlicht, Sam Houston, Scott

MacGreogor, Shane Horton, Shawn McBride, Tim Blackburn, Tim Driessnack, Todd Trucks, Tom Ellis
Alexandrea Peake
Marsha Phillips
Coach Jim Powell
Red Cross Hero's Campaign
George and Frances Rouman
Don Schuster
Joseph Sowmick
William J. Strickler
John and Barbara Tousley
Mary Ulmer
Carolyn VanCleave
Bob Viau
Jack Weisenburger
Sharon Welling

Gifts Received in 2009 in Memory of:

Shirley Albrecht
Christopher John Andera
Matthew J. Boles
Darlene Bond
Dick Brandell
William Ellis Brockman
Nancy J. Carey
Donna J. Collins
Donald, Randal and Orville
Joe "Iron" Epple
Jeremy Ervin
Dorothy Finnerty
Mary Catharine Fortino
Coach Hilt Foster
O. Wendell and Deborah Gilmore
David Goffnett
Gail Gorton
Duane Gray
John and Eleanor Gray
Emerson W. Green

Doug Griffin
Connie Harkins
Caroline Millar Hartman
Earl Hartman, Sr.
Jim Hartman
Russ Herron
Idonea "Dony" Hersee
Pat Horgan
Pauline A. Howard
Paul Hubscher
Roger Hughes
J. Paul Janes
Levi Jeppesen
Bill Jones
Lyle Jones
Jerry Juncker
Harold and Marie Krapohl
Joe Lawrence
Eugene A. Lemorie
Shirley Lemorie

Kay Lovett
Rachel Mackey
Mabre Maness
Chris Maniteau
Midge McCarthy
Pat McGuirk
Jane McNamara
James Lee Messinger
Paul Moeggenberg
Tanya Mogg
George and Fern Natzel
Bernie and Emily Naumes
Joe Nelson
Charles Newell
Wayne Newman
Aileen Olson
David Page
Mark Pasch
Patrick Quillen
Patty Reed

Howard Reedy
Jeffrey Reedy
Matt Reinke
Tracey Rondy
Ester Schuster
Jack Serier
Matthew Sharrar
Jean Hanson Smith
Kay Smith
Gary and Nancy Stilgenbauer
Coach Bob Sullivan
Elizabeth Sweeney
Dorothy Trimby
Carlene Uphold
Robert and Kathryn Utterback
Kristopher Walden
Brian Wentworth
Louise Williams
Bruce W. Wood
Brian Zuker

Gary Moe Memorial Scholarship Fund

The Gary Moe Memorial Scholarship Fund was created after his passing by his best friend, Cheryl Moe. Cheryl wanted to create something that had a long time presence in Gary's honor. She decided on a scholarship fund because Gary believed in the power of education to transform the lives of adolescents.

Gary Moe was a resident of Mt. Pleasant for 50 years after moving to the area from Lansing. He graduated from Mt. Pleasant High School, received his bachelor's degree from Central Michigan University and obtained a Master's degree in Social Work from Michigan State University. Gary and Cheryl Moe had a son Kevin, and two grandchildren, Ayden and Kylee Moe.

Gary dedicated his life's work to better the lives of the clients at the Mt. Pleasant Regional Center and his family often referred to him as a "workaholic". He thrived on the knowledge that learning opportunities enhanced employee skills and improved their ability to meet the

needs of their clients and worked his way up to Human Resource director. Gary attended the Mt. Pleasant Community Church and volunteered for A.I.M. He enjoyed traveling, gardening, antiquing and cooking.

In honor of the opportunities Gary had throughout his life, his family wants to continue to honor his strong belief in educational opportunities. The Gary Moe Memorial Scholarship Fund awards a scholarship to a graduating senior from Mt. Pleasant Oasis High School who plans to attend an accredited post-secondary college, university, or vocational school.



Carolynn Cosan Memorial Scholarship Fund

Carolynn Cosan was an inspiration and a mentor to her friends. Carolynn touched the lives of so many and was loved by all. She demonstrated kindness, respect, and responsibility throughout her life by taking care of the needs of her teammates and friends before considering her own well-being. Her love and deep affection for others also helped her develop the confidence and courage to make right that which she felt was wrong. She worked hard for and was honored as the first ever female Mt. Pleasant High School senior to receive a combined academic and athletic scholarship to play Division II soccer. However, she died in a tragic car accident two weeks prior to high school graduation. Carolynn's short life was like a comet, burning brightly through our lives and leaving impressions upon us all.



Carolynn's life was full; she was a Girl Scout, a Police Academy Youth Services Cadet, she played varsity soccer for four years, ran track and cross country, participated in gymnastics, softball, and freestyle snowboard competitions. Carolynn was also a member of the National Wildlife Turkey Federation, and competed as an AKC junior dog handler. Carolynn demonstrated her charismatic leadership abilities as captain of the soccer team her senior year, and coached a children's soccer team for Mt. Pleasant. She also became a certified snowboard instructor through the Professional Snowboarding Instructors of America, and was successfully certified as a soccer referee with both the Michigan Youth Soccer Association and the Michigan High School Athletic Association.

The scholarship created in Carolynn's memory will be awarded each year to a graduating senior female from an Isabella County High School who has participated in a varsity sport, club sport, refereed, coached, or taught a sport, or was a member of the Girl Scouts. Candidates for the Carolynn Cosan Memorial Scholarship will demonstrate that they have a positive attitude and leadership skills on and off the field, have developed a responsible work ethic, commitment to the team, and respect for rules and the rights of others. It is the Cosan family's desire that individuals who are awarded this scholarship will strive to become valuable citizens of their community by contributing to the welfare of those in need, and brighten the lives of those who they touch, like the dust that was emitted from Carolynn's comet.



The Denison Legacy Society

The Denison Legacy Society was established in honor of Rollie and Olga Denison, who gave so bountifully of their time and resources to our community. The Society recognizes individuals and couples who have named the Mt. Pleasant Area Community Foundation as the beneficiary of any type of planned or deferred gift. The purpose of the Society is to acknowledge and thank those who have made these gifts and to encourage and inspire others to do the same. Gifts to the Legacy Society are endowed and leave a permanent legacy in our community. A planned gift will do exactly what you want it to do – FOR GOOD. FOR EVER.



Founders gathered for the first of what will be an annual celebration on September 16, 2010 at the home of Bill and Janet Maar Strickler. Members of this generous group include:

Anonymous
Pat and Jack Anson
Barbara Bissot*
John and Sue Bradac
Mary Ellen Brandell*
Howard and Mary Ann Breuer
W. Larry Collins
William and Joneil Cook
Timothy and Mary
Elizabeth Curtiss
Mark and Patricia Cwiek
G.R. (Rollie)* and
Olga Denison*
George and Barbara Dunn
J. Dean Eckersley
James and Deborah Goodrich

Cindy Hales
Jack and Connie* Harkins
I.W. "Bucky"* and Velma
Hartman*
Idonea Hersee*
James* and Sally Hodgins*
Ronald Hodgson
G. Charles and Janice L.
Hubscher
Robert and Catherine Janson
John and Ann Jensen
L.A. and Marilyn Johns
Dave and Sue Keilitz
Steven and Deborah
Martineau
Jane McNamara*

Richard Miller
Mike and Dianne Morey
Tad and Laura Richards
Bill and Eileen Rush
Donald Schuster
Doris Sherwood
Kay Smith*
Mark and Shelly Smith
Nolan Stilgenbauer
Bill and Janet Maar Strickler
E. Diane Tope
Charles Walmsley
Jack and Sally Weisenburger
Louise Williams*
Jim and Carol Wojcik

* Deceased

To join this esteemed group, simply arrange for a planned or deferred gift to benefit the Foundation, and then inform the Foundation by submitting a Denison Legacy Society form. It is not necessary to provide the amount of a planned or deferred gift. You are, however, encouraged to discuss your plans with the Foundation so that we may make certain to comply with your wishes upon receipt of your gift.

Future Leaders of Our Community

The young leaders of the Youth Advisory Committee (YAC) spent this year positively influencing their community while learning about leadership and civic engagement. The three facets of YAC are: grantmaking, community service, and raising money for the Kellogg Youth Fund, a permanently endowed fund of the Mt. Pleasant Area Community Foundation.

The YAC meets once a month to review grant applications, receive leadership and philanthropy training and plan community service projects. The YAC has a responsibility to oversee grants made from the Kellogg Youth Fund. This year, that fund had approximately \$37,000 available for programs and projects that target the needs of young people in Isabella County.

The YAC reviews grants and makes recommendations for those that support our youth. Their recommendations are sent to the Foundation's Board of Trustees for final approval.

Every three years, the YAC surveys the 8th and 10th graders of Isabella County to help identify what they see as the greatest needs and problems facing the youth in our community. Needs and issues addressed in the survey are things such as: alcohol and drug abuse, family issues, depression/suicide/loss, stress/school pressure, personal safety and teen sexual activity/pressure. The Youth Needs Assessment Survey helps the YAC when they are reviewing grant applications. They want to fund the programs and services that will best meet the needs of the youth in Isabella County. The YAC look forward to surveying the youth again in 2011.



Youth Advisory Committee

2008 Overall Results of the Youth Needs Assessment Survey

In order from most important issues to least important issues

- #1. Alcohol and drug abuse
- #2. Stress/School Pressure
- #3. Teen Sexual Activity or Pressure
- #4. Smoking/Use of Tobacco Products
- #5. Family Problems (divorce, abuse, finances, etc.)
- #6. Bullying (personal threats, gossiping, internet harassment, etc.)
- #7. Health Issues (eating disorders/obesity/anorexia/bulimia)
- #8. Depression/Suicide/Loss
- #9. Self-esteem/Respect for yourself and others
- #10. Cliques
- #11. Teen Crime (shoplifting, vandalism, etc.)
- #12. Discrimination (race, gender, sexuality, appearance, religious, etc.)
- #13. Lack of Activities Outside School
- #14. Personal Safety (gangs, fights, school violence, threats, etc.)
- #15. Sexual Assault (rape, date rape, sexual harassment)

Surveyed: Mt. Pleasant schools, Beal City schools, Shepherd schools and Sacred Heart Academy

www.mpacf.org



The YAC is always very involved when it comes to community service. This year, the members of YAC participated in numerous community service activities. The two favorite activities of the group were the Lion's Chicken Barbeque and Christmas Outreach.

The Lion's Chicken Barbeque has been an annual event for the YAC the last few years. The Lion's Club cooks about 5,000 chicken dinners at Island Park and sells them to the community. The revenue benefits organizations that deal with sight and hearing issues. The YAC loves providing volunteers to help with this project!

Christmas Outreach has been a volunteer organization in our community for the last 20 years. For the last few, the YAC has granted money to Christmas Outreach for items for children helped by their program. The YAC members also volunteered with the program, helping to organize clothes, and distributing items to the families helped by the program.

One of the YAC's other goals is to help the Kellogg Youth Fund grow. The YAC participates in many fundraisers throughout the year, but their all-time favorite event is Flamingo Flocking!

For a donation of \$50, donors can order a flock of 30 pink, plastic flamingos to land on someone's lawn at the crack of dawn! The person who gets "flocked" can then make a donation and pass the flock onto someone else. It's a fun way to get the community involved with fundraising for the Kellogg Youth Fund. Keep an eye out next August—you may be flocked, too!



YAC
Youth Advisory Committee

YAC

Youth Advisory Committee

Matthew Blackburn (MPPS)
Matt Brock (MPPS)*
Jake Christensen (BCPS)
Jared DeFrain (MPPS)
Riley Edwards (MPPS)**
Kara Heugel (SPS)**
Katharine Janes (SHA)

Wes Kenny (SPS)*
Kevin Natke (SHA)*
Sam Neyer (SHA)**
Natalie Noble (SPS)
Jacob Pifer (SPS)*
Olivia Rau (BCPS)
Collin Ridley (MPPS)

Lindy Sowmick (MPPS)
Janelle Urban (CMU)
Julia Wagner (SHA)
Sarah Gilbert (Adult)
Dyke Heinze (Advisor)
Eric Janes (Adult)
Betty Wagner (Adult)

*Denotes new member

**Denotes retiring member

2010 Scholarship Recipients

Mt. Pleasant Area Community Foundation awards more than \$55,000!

The Mt. Pleasant Area Community Foundation hosted the 2010 Scholarship Reception on Thursday, May 13, at Buck's Run Golf Club. The event recognized students who received one of 66 available scholarships.

During the reception \$55,250 in scholarships were awarded to area students. More than 260 guests attended the event to honor those for whom the scholarship funds are named and the scholarship recipients. Recipients ranged from middle school to college students, with most planning to attend an accredited college, university or trade school this fall. Each scholar was recognized for their achievements to date and applauded for their future academic plans.



2010 Mt. Pleasant Area Community Foundation Scholarship Recipients

Beal City High School

Supercarguy Scholarship \$500.00 Paul Gross
Matthew S. Sharrar Memorial Scholarship \$1,000.00 Jordan Rau
Harold and Marie Krapohl Scholarship \$500.00 Logan Steffke
Isabella Bank Scholarship \$750.00 Troy Stratton

Chippewa Hills High School

Isabella Bank Scholarship \$750.00 Gavin Conley

Clare High School

Isabella Bank Scholarship \$750.00 Tabitha Bissell
Firstbank Scholarship \$750.00 Benjamin Randall

Farwell High School

Isabella Bank Scholarship \$750.00 Kayla Kapplinger

Madison Christian Home Academy

Isabella Community Credit Union Members' Scholarship
\$500.00 Mariah Earley

Merrill High School

C. Jane (Dubay) & Dwight D. Dodge Memorial Scholarship
\$500.00 Austyn DeBeau
Richard C. Dubay Memorial Scholarship \$500.00 Kaleb Thompson

Montabella High School

Isabella Bank Scholarship \$750.00 Rachel White

Morey Charter School

Jason Parrott Scholarship \$600.00 Heidi Fletcher

Mt. Pleasant High School

Matthew J. Boles Memorial Scholarship \$500.00 Dylan Bambach
Mt. Pleasant High School Class of 1959 Legacy Scholarship
\$500.00 Steven Bess
Rotary Scholarship \$500.00 Jillayne Burden
Robert A. and Catherine A. Janson Scholarship \$500.00 Brian Cone
Bruce William Wood Memorial Scholarship \$500.00 Eleanor Etienne
Morey Technical Training Scholarship \$3,000.00 Joshua Fox
Matthew J. Boles Memorial Scholarship \$500.00 Alyson Hill
James R. Hodgins Memorial Scholarship \$1,000.00 Alexandra Hinck
Martin Family Scholarship \$1,500.00 Ashley Jarrett
Chris Maniteau Memorial Wrestling Scholarship
\$350.00 Casey Kennedy
Matthew J. Boles Memorial Scholarship \$500.00 Nick Martin
Heydenburg Family Scholarship \$500.00 Elizabeth McBryde
Isabella Bank Scholarship \$750.00 Elizabeth McBryde
Isabella Bank Scholarship \$750.00 Arpita Mohanty
Morey Technical Training Scholarship \$5,000.00 Tyler Merrihew
Denison Family Scholarship \$2,400.00 Gabriel Owen

James R. Hodgins Memorial Scholarship \$1,000.00 Emily Paik
 Firstbank Scholarship \$750.00 Katrina Ritchie
 Harry E. Tope Memorial Aviation Scholarship
 \$2,000.00 Zachary Smith
 Nancy Carey Memorial Scholarship \$500.00 Heather Straus
 Firstbank Scholarship \$750.00 Kassandra Voeks
 Christopher John Andera Memorial Scholarship
 \$500.00 Emily Wilson
 Rotary Scholarship \$500.00 Kara Wilson

Oasis High School

Maness Family Scholarship \$1,000.00 Nicholas Bonstelle
 Gary Moe Memorial Scholarship \$1,000.00 Ann Guthrie

Sacred Heart Academy

J. Paul Janes Memorial Scholarship \$750.00 Bridget Bennett
 Isabella Bank Scholarship \$750.00 Elizabeth English
 Martin Family Scholarship \$1,500.00 Charlotte Hulme
 W. Sidney & Judith French Smith Community Scholarship
 \$500.00 Kristine Petrella
 Rotary Scholarship \$500.00 Mitchell Wieferich-Cramer
 Earl G. Hartman, Sr. & Caroline Millar Hartman
 Scholarship \$2,500.00 Katelyn Zeh

Shepherd High School

Isabella Bank Scholarship \$750.00 Emily Bryant
 Emerson W. Green Memorial Scholarship \$600.00 Jennifer Carrick
 Shepherd Public Schools Scholarship \$600.00 Wesley Kenny
 Susan K. and Douglas E. Dodge Scholarship
 \$500.00 Christina Marsh
 Shirley Lemorie Memorial Scholarship \$500.00 Nathan Seely

Nolan D. Stilgenbauer Agricultural Scholarship
 \$1,500.00 Justine Travis
 Firstbank Scholarship \$750.00 Anna Travis
 Shepherd Public Schools Scholarship \$600.00 Kerri Vasold
 Robert F. Murray & Co. CPAs Scholarship \$1,000.00 Jessica Warner
 Shepherd Public Schools Scholarship \$600.00 Natalie Yuncker

Shepherd Middle School

Lemmer Family Scholarship \$500.00 Kevin O'Brien

College Students

John P. & Ann S. Jensen Scholarship \$2,000.00 Shayna Cary
 Kristopher Walden "Waldo" Arts Scholarship
 \$500.00 Megan Courser
 Joyce and Gerry Carter Scholarship
 \$1,500 Maureen Harke
 George & Frances P. Rouman Scholarship
 \$500.00 Gretchen Hazelbaker
 Donna & Larry Collins/GFWC Scholarship \$500.00 Sara Todd



www.mpacf.org

John R. and Constance M. Harkins *Community Fund*



Connie and Jack Harkins have been good friends to the Mt. Pleasant Area Community Foundation. In her honor, to memorialize her life, Jack started the John R. and Constance M. Harkins Community Fund.

Connie and Jack are both CMU graduates and were married on June 14, 1965. They chose to remain in the Mt. Pleasant area where they raised their 3 children, Elizabeth, Christia, and John. Connie was a member of the Sacred Heart Parish, the Mt. Pleasant Jaycee Auxiliary, the Mt. Pleasant City Club, and the Central Michigan Community Hospital Auxiliary where she supported patient and staff needs.

Jack's business career was as a 30 year employee and eventual co-owner with Rudy Kler of Lease Management, Inc. Rollie Denison, the former owner, served as a mentor to Jack guiding him in both business and philanthropy. Connie and Jack's fund is a donor advised fund as they have always believed that the fund needs flexibility to address changes in our community over time.

Jim Hartman Study Abroad Scholarship Fund

The Jim Hartman Study Abroad Scholarship Fund was created to honor the memory of Jim Hartman, who died tragically in a plane crash in June 2006. Jim's sister, Marge Kik, started the fund in hopes that it would help area students experience people and places around the globe, and because one of Jim's passions was traveling.

Jim lived his life to the fullest as a husband, brother, son, uncle and friend. He enjoyed making music, writing, photography, adventure and flying. He made a living as a real-estate developer, an accountant by trade and an entrepreneur. Jim would do anything for anyone in need and was known for his honesty and integrity.

Marge hopes this fund will assist deserving young people in fulfilling their wanderlust while furthering their educational careers.



RICHARDS

LEADERSHIP FUND

Tad and Laura Richards created the Richards Leadership Fund to give back to the foundation and our community in a long lasting way. The Richards Leadership Fund would ensure the longevity of the foundation by supporting the administrative and operational costs of MPACF. The Richards feel that this fund will not only help the foundation sustain itself, but also help the foundation grow in the future.



Laura has served on MPACF's board for three years and the Richards have been active and engaged community members through a variety of community organizations since moving to Mt. Pleasant in the 1980s. Through Laura's work with helping MPACF move into their new home, The Hersee House, she found the inspiration to create the Richards Leadership Fund. "It's going to be a huge endeavor to operate this property," said Laura, "we want to be able to help the foundation with operational costs, and even maybe hire more staff in the future."

"The success of the Mt. Pleasant Area Community Foundation lays in the hands of involved community members, great leadership, and dedicated staff. We need to support the operating costs because it's at the core of what the foundation does," Laura said.

www.mpacf.org

Mt. Pleasant Oiler

Athletic Boosters Fund



The Mt. Pleasant Oiler Athletic Boosters Fund was created to ensure a long legacy for the Boosters and their support of Mt. Pleasant High School athletics. David Moscardelli, Boosters' President, said it was "critical to ensure the strength of the Boosters long into the future, even through these tough economic times."

The Boosters assist with the identification of Oiler athletic program needs and the promotion of accomplishments within the community. They lend assistance and support, where needed, to staff as they carry out various athletic functions and assist Mt. Pleasant Public Schools in providing a desirable place for student athletes and coaches.

The Boosters hope this organizational fund will grow into a lasting legacy and provide funding for many new scholarships and equipment purchases.



Pat and Jean McGuirk Family Fund

The Pat and Jean McGuirk Family Fund was established in memory of Patrick H. McGuirk, Sr., by his wife, Jean McGuirk, and his children Pat McGuirk, Jr., Peggy Moore, Colleen Shaw, and Kelly Keehbauch.

Pat was one of six siblings born in 1931, and he grew up in humble conditions. He knew what it was like to be hungry, cold, and less fortunate. With the vision he had for his life he overcame his circumstances with hard work and his life partner, Jean McGuirk. Pat told his family many times of working in the potato fields when he was a young child, and he worked on a turkey farm and detested the smell or eating turkey after that experience. Pat always worked; from the time that he was a young child until two days before his death on October 8, 2009. In 1977, Pat, Sr. and Pat, Jr. formed a partnership under the name of Pat McGuirk Excavating. Pat and Jean enjoyed a mutually satisfying relationship with their family and in their business. Pat performed the physical labor on site, while Jean was responsible for the bookkeeping, answering the telephone, and was instrumental in all business decisions. Pat always said "It feels good to work hard". And his

strong work ethic was passed on to his children.

Pat worked six days a week, and many times until dark in the summertime. On Sundays he took his children to Coldwater Lake and pulled them skiing, swam with them, and he never said, "No, I'm tired". In the winter months, on Sundays, he took his family for ice cream cones at McFarlane Dairy (the location is now Fire House 5) and they all took a ride.

Pat had a special fondness toward children, and it was typical for him to take a child under his wing. He tried to give these children the good things in life, even if it was only a bag full of penny candy or if it was for him to physically take a child to select their own Christmas present. Although Pat achieved a very rewarding life, through

his hard work, he never forgot where he came from. Pat had charisma and was able to converse and reach people of all ages. Jean received many sympathy cards after Pat's passing that included the disclosure of these many acts of kindness that his own family knew nothing about. And on a lighter note, his generosity wasn't only lavished on the human species; Pat fed the birds and wildlife around their home for forty years.

The Pat and Jean McGuirk Family Fund is designated to Hospice, the Women's Shelter, and the Isabella Community Soup Kitchen; even from afar he is able to reach those in need.

Gregory Keith Baderschneider Scholarship Fund



"If it has always been done this way, let's try it a different way," was Greg Baderschneider's motto. "He was always thinking and loved learning new things," said Greg's wife, Pattie. This is one of the reasons she chose to honor Greg's memory by starting a scholarship fund with the Foundation.

Greg was a passionate outdoorsman whose parks career began in high school, when he was working as a life guard for the Lake Mitchell Park

in Cadillac. Pattie and Greg met while he was working on a project for the City of Mt. Pleasant with her father. It was that job with the city that inspired Greg to go back to school and work for the Isabella Parks and Recreation Department. Greg also enjoyed wood working and golfing. Pattie and Gregg had three daughters, Samantha, Shaina and Jessie. They were raised in Mt. Pleasant and went to the public schools.

Greg left a lasting legacy in the community during his 18 year career. He turned many of his visions into reality, such as the riverfront trail system and the 23-acre Horizon Park. Pattie said they would often walk the trails and Greg would talk with her about his potential projects. "It wasn't just senseless rambling," she said, "he had it all planned out."



The only requirement to receive the scholarship is the student, whether they're a high school senior or non-traditional, must have a plan to continue their education at an accredited college, university, or trade school. Pattie wants to give non-traditional students the chance to earn the scholarship because Greg went back to college after the marines, while having a full-time job and her just having their first child. Special consideration will be given to students who have suffered family loss, because Greg lost his mother and younger brother. Pattie said, "He knew the importance of family."



Special Olympics

Michigan Fund

Special Olympics Michigan (SOMI) is a life-changing movement of people helping people. The athletes of Special Olympics are constant reminders of all that is right with the human spirit. The mission of SOMI is to provide year-round sports training and competition in a variety of Olympic-type sports for children and adults with intellectual disabilities, giving them continuing opportunities to develop physical fitness, demonstrate courage, experience joy, and participate in a sharing of gifts, skills, and friendship with their families, other athletes, and the community. The focus is on what athletes can do. Like everyone, Special Olympics athletes like to win, but more importantly - they strive to do their best. The sportsmanship that is demonstrated on the court, in the field, or on the track serves as an inspiration to all.

The ultimate objective of SOMI is to help people with intellectual disabilities participate as productive and respected members of society at large, by offering them a fair opportunity to develop and demonstrate their skills and talents through sports training and competition, and by increasing the public's awareness of their capabilities and needs. Through their participation in SOMI athletes gain confidence and build a positive self-image, which carries into the classroom, the home, the workplace and the community. All training and competition

opportunities are provided free of charge to the athletes and their families, enabling everyone to experience the benefits of Special Olympics that extend well beyond the playing field.

The Special Olympics Michigan Fund, a designated fund, was founded by Robert Long in 2010 to benefit Special Olympics Michigan, a 501(c)(3) nonprofit organization headquartered here in Mt. Pleasant. "We are thrilled that an endowment fund such as this will help us continue to support more than 18,000 Special Olympics athletes in Michigan," noted Lois Arnold, President and CEO of SOMI.



Special Olympics
Michigan

2009 Donors to the Foundation

\$50,000 to \$99,999

James R. Hodgins Memorial
The Morey Foundation

\$10,000 to \$49,999

Anonymous
Isabella Bank
Isabella Community Credit Union
The Leppien Foundation
Maness Petroleum Corporation
Mid Michigan Chapter Safari Club
International
Lon Morey
Mt. Pleasant Discovery
Museum Fundraising
Dennis and Sandy Olson
William J. Strickler
Summit Petroleum
Marcia W. Zech

\$5,000 to \$9,999

Anonymous
Appraisal Advisory Group, Inc.
Central Michigan District
Health Department
Dorsay
Firstbank
The John H. Goodrow Fund
LaBelle Management
Jean A. McGuirk
George and Fran Rouman
Matthew Sharrar Memorial
Committee of the Shepherd
Community Fund in Honor
of Robert Bates
Jan and Bill Strickler
Richard D. Verleger
Estate of Louise A. Williams

\$2,500 to \$4,999

Chris Andera Memorial
Joseph T. Barberi, P.C.
Richard J. and Mary C. Barz
Mary Ellen Brandell
Paul and Carolyn Buiten -
Barnabus Foundation's
Stewards Fund
Shirley M. Decker
Jack Harkins
Cathie and Bob Janson
Bob and Jeanne Long
Chris Maniteau Memorial Golf Outing
Steve and Deb Martineau
Estate of Jane McNamara
Morbark Inc.
Michael and Dianne Morey
Paul B. Murray
Mick and Dorothy Natzel
W. Sidney and Judith French Smith
Michael and Barbara Sullivan
Dot and Bill Theunissen

\$1,000 to \$2,499

Alta Construction Company
Anonymous
Art Reach of Mid Michigan
Jeffrey S. Barker
Mark and Linda Beard
Blodgett Oil Company/
Blodgett Foodmarts
Glen and Kathy Blystone
Veha Chamichian
Chemical Bank
Tim and Teresa Coscarelly
Kimber and Judy DeWitt
Sue and Doug Dodge
John and Deborah Hartman

Dyke and Phyllis Heinze
Patricia Herron
Hub International Midwest
John and Ann Jensen
J. Hudson and Ann M. Keenan
Dave and Sue Keilitz
Marjorie and Douglas Kik
Diane and Stephen Lambert
Bob and Kerie Lemorie
Bob McAlester
Caroline J. Merrill
Paul Moeggenberg Family
Golf Outing
David C. Moore
Mt. Pleasant Rotary Club
James A. Ranck
Sam's Club Foundation
Donald O. Schuster
Shaheen Buick, Pontiac,
GMC, Cadillac
Mr. and Mrs. Brian Smith
Sam and Trudy Staples
Nolan D. Stilgenbauer
Thomas R. and Judith D. Sullivan
Witbeck's Family Foods

\$400 to \$999

Chris and Melanie Allan
The Allstate Foundation
Bandit Industries, Inc.
Jeff and Nancy Barnes
Bigard & Huggard Drilling
Frank and Valerie Boles
James F. Brandell
Howard and Mary Ann Breuer
Ellis and Ann Brockman
Timothy and Elizabeth Brockman
Cindy and Allen Bryan
Eunice Burgess
Mike and Sue Wendrow Carey
Patrick and Leanne Carey
Keith and Betty Jo Charles
Bill and Tami Chilman
Clover Consulting, Inc.
Miriam and Timothy Connor
Council of Michigan Foundations
Dow Corning Corporation
Downtown Drugs
Tom and Penny Endres
Laura and John Faber
James and Lee Fabiano
Julie and Kurt Feight
John and Coquette Fluharty
Paul Fortino, Jr.
Rod and Julie Freeze
General Agency Company
Roger and Alice Goenner
Sally Goodrow
Laura C. Gourlay and John W. Petras
Linda L. Gray
Dr. John and Carol Grossa
Mike and Laura Harter
Kenneth and Andrea Hofmeister
Monica Holmes
Robert and Julia Holmes
Dr. and Mrs. Brock Horsley
Janice Brien Huffman
J. Paul and Melissa Janes
Eileen K. Jennings
Donald J. Klein Jr.
Doug Klein
Michael Klicek and Cynthia Darson
Gary and Sue Knight
Sandra and Robert Kullman
Lease Management, Inc. -
Jack Harkins and Rudy Kler
Debra C. Lehmann
Barb and Tim Maness

Michael and Laura Maness
Richard and Julianne McGuirk
Mary A. McPherson
Beulah McQueen
Cheryl Meyer and Jeff Percha
Larry and Judy Conroy Moldenhauer
Mt. Pleasant Public Schools
Muskegon Development Company
Paul and Tracey Natke
Matthew and Robin O'Dell
The Optimist Club of Mt. Pleasant
Gary and Lynn Pohl
Michele and Martin Punke
Judith and Russell Rader
Jackie Randall
Ross and Shelly Rapaport
Jeff Reedy Memorial Golf Outing
Rhoda Reedy
Tad and Laura Richards
Barbara A. Rinckey
Ron Schafer
Victor Schiavi III
Richard Sebring and Kristin Schuette
Kristin M. Sheridan and
Michael Libbee
Jim and Lynn Sisson
Michael and Joan Swirtz
Cecil and Yvonne Travis
United Apartments - Rick McGuirk
Brenda J. Upton, M.A.
Margaret and Ronald Vredevel
David and Diane Whale
Bob and Nancy Wheeler
Wilson Steel-Fab & Machine, Inc.
Don and Sally Wiper
James and Connie Wyman
Mark and Terrie Zitzelsberger

\$200 to \$399

Alberta McBride
Alma Flyers Swim Club
Anonymous
Barbara Dixon
Barbara K. Birkner
Beal City Foundation
Fund Advisory Board
Beal City Rocket Football
Ben and Rosemary Prasad
Betsy Banta
Bob and Linda Ervin
Bob and Marianne McJames
Bruce and Jean
(Muterspaugh) Sabin
C.J. and W.H. Segrist
Cameron Lovett
Carol Burdette
Carole Howard
Caroline Kramer and Rick Stevens
Central Michigan Community
Hospital
Cheryl Weekley
Chris and Allison Schuster
Chris and Kristin Bond
Chris and Pete Orlik
David and Linda Kolenbrander
David and Linda Coyne
Dean Kreiner Family
Deborah A. Barker
Denise and Jerry Janiec
Denison & Associates, LLC
Dennis and Kathleen Wright
Dennis P. Angner
Dr. Philip L. Kintzele
Dr. Vernon E. Kwiatkowski
Employees of Bandit Industries
Fabiano Brothers
Francis and Mary Lois Molson
Gayle Grant
Gayle Mortensen McBride
Gregory and Cecilia Bator
Hildegard Mengot
Hubscher & Son, Inc.
Jan Patrick
Janet and Norman Clarke
Janet Collins
Jay's Sporting Goods, Inc.
Jennifer M. Lemorie
Jerel and Carol Konwinski
Jim and Kathy Hill
Jim and Naomi Stark
John and Audrey Cumming
John and Patricia Murphy
John B. Mitchell
John Benaske
John Engler
Julayne and Brian Goward
Julia Becker
Karen Vanantwerp Latham
Kathleen Tarrant
Keith and Judy Moeggenberg
Krapohl Ford Lincoln Mercury
L.A. and Marilyn Johns
Laurie Powell
Leadership Advancement
Scholarship Class of 2005
Lewis Foster
Linda and Al Kaufmann
Linda E. Colburn
Lisa M. Ferden
Lucinda Mae Clark
Marie Green
Mark and Pat Cwiek
Mark Greene and Kathleen Marquis
Mary and Sidney Graham
Michael C. Kostrzewa
Michele M. Gentry
Mickey Claus-Egger
Mike and Judy Ross
Mike and Kami Hartzler
Mike and Kathy Poff
Mike Brockman and Marcy Taylor
Mr. and Mrs. Keith Frame
Mt. Pleasant Community of Christ
Mt. Pleasant High School
Class of 1959
Mt. Pleasant Lions Club
Muriel E. Straight
The John and Kathleen
Neyer Family:
Bob and Ann Neyer
Jack and Cora Neyer
Jane and Mike Bacon
Ken and Diane Neyer
Patty and Mike Gostola
Rosee McFarlane
Pamela L. Grozdon
Pamela Morell
Patty Kasbohm
Paul F. Birkner
Pauline and Leo Pasch
Richard and Colleen Divine
Richard and Donna Parr
Robert and Irma Grabowski
Roy and Judy Johnston
Saginaw Chippewa Indian Tribe
Sanda Wiper
Shepherd Public Schools
Smith Equities Corp.
Starvation Creek Deer Camp
Sue and John Bradac
Susan L. Clarke
Terry and Marcia Stacy
Thomas and Cindy Bromell
Thomas and Mary Krapohl
Tim and Mary Ann O'Neil
Virjean Johnson

W. Joseph and Jane M. Manifold
W. Larry Collins
Wally and Margo Link
Wayne Anderson
William and Eleanor Martin
Wilma L. Blackman
Zhenyu Huang

\$100 to \$199

Ada Marie Morey
Adverna C. Nolan
Alan and Gayle Gumm
Alan and Kathy Johns
Amanda A. Schafer
Amy Motz
Anne Marie Casey
Annette M. Clark, CPA
Arlene J. Murray
Barb Jones
Barbara and Fred Honhart
Barbara J. Brehm - Grewe
Barbara Theunissen
Beal City Public Schools
Ben Tigner
Bernard Zeneberg
Bill and Diane Saltarelli
Bill Hooker
BJ Lipscomb Mogg
Bob and Sue Davis
Bonnie Vetter
Boy Scout Troop 304
Brian and Debra Horanoff
Brian and Heidi Williams
Bruce and Jane Kenamore
Carl and Alison Barberi
Carol Meixner
Carol and Jim Wojcik
Carole and Lee Kennett
Cathy Schenkhuizen
Charles and Dorine Lilly
Cheryl L. Gaudard
Chippewa Lanes
Chris and Connie McCann
Chris and Marcie Rouman
Chris Rowley
Clare County Business
Claudia Joslin
Clinical Hospital Pharmacy
Management
CMU Athletics
Colt Country Music -
Jim and Dee Colt
Coyne Oil Corporation
Dana and Kathy Sudborough
Daniel Schneid
Danna C. Bell-Russel
Darcy Orlik
Dave and Elizabeth Bergman
David and Carrie Blackburn
David and Gloria Wilson
David and Mary Kay Reetz
Dean and Betty Eckersley
Dick and Ruth Beltinck
Dick and Sandy Wood
Don and Joann Ingebrigtsen
Doris and Charles Sherwood
Dr. Pamela L. Gray
Duane and Elaine Ingraham
Earl and Georgann Schuster
Ed and Ruth Helwig
Elizabeth and David MacLeod
Elizabeth and Fred Adkins
Elizabeth Jackson M.S., R.D.
Eric R. Janes
Ethel L. Hughes
Eugene M. Pety
Evelyn Leasher
Frank and Cynthia Pace
Freddie's Tavern

Gary and Judy Ramsower
Gary G. Taylor
George and Susan Bayless
Gerald Pohl
Great Lakes Lighthouse Keepers
Greentree Cooperative
Greg G. Paxton
Hall, Lewis & Bolles, P.C.
Harold B. Cook
Harvey and Marjorie Schafer
Herb and Judy Wybenga
J. A. and R. K. Miller
J.H. Logie
James and Linda Mitte
James and Marilyn Sweeney
James and Patricia Hathaway
James E. Fogerty
Jane Wittkopp
Jean Claus
Jean Mayhew
Jeanette Homan
Jeffrey and Meredith Hancks
Jennifer and Richard Verleger
Jennifer Olsen and Tim Pletcher
Jill and Corey Bourland
Jill Wright
Jim Haton
Jo and Al Palm
Joan Bridgmon
Joe and Connie Wittekind
Joe and Jan Lopata
John and Cyndi Lewis
John and Deana Monahan
John and Deborah Skinner
John and Karen Williamson
John and Lorrain Duffy
John Erickson and Lauren McConnell
Joshua and Heather Cochran
Julie, Michael and Megan Stinson
Karen Green and Leonora Forist
Karen Mason and Matthew Schaefer
Kate, Andy and Ann Marie Brockman
Kathleen Beebe
Kathleen M. Utecht
Kathy and Tom Wilbur
Keith and Pat Feight
Kimberly and Robert Hagerty
Kirk Sponseller and Nancy Priestap
Larry and Jan Galgoci
Libby and Cary Murch
Lori and Todd Swarts
Lori Tyree
Lorie R. Hawkins
Lorraine Campbell
Lorraine LaBelle Knight
Luke and Allison Karr
M. Jane Eldred
Margaret Hicks
Margie Swindlehurst Geasler
Marian Matyn and Family
Marilyn and Gaylord Courter
Marilyn Jakad Manning
Marion E. Brademus
Mark and Cheryl Strandskov
Mary Kelly
Mary Lou Morey
Mayville Boy Scouts of
America Troop 558
Melva K. Coyne
Michael and Denise Janes
Michael and Julie Lorenzen
Michael and Wendy Papa
Michigan Archival Association
Michigan Hemingway Society
Midland Engine, Inc.
Mid-Michigan Pest Control
Monalee Switzer
Mr. and Mrs. Kenneth Graham
Mr. and Mrs. Todd Graham

Mr. and Mrs. William G. Bowman
Mt. Pleasant Agency, Inc.
Nancy P. Beaumont
Norma and Howard Richardson
Norma J. Bailey
Off-Campus Library Services
Pamela Cumberland
Park Library Staff
Pat and Nancy McGuirk
Patricia L. Welgs
Patricia Podoll
Paul and Carole Heydenburg
Paul and Gloria Siers
Paul and Mary Heath
Phyllis Jean Gilmore
Randall and Joyce Jimerson
Ray R. Farley and Family
Rex and Kathlyn Tower
Richard Janis
Robert and Marian Bromley
Roger and Sarah Gilbert
Ronald and Deborah Marmarelli
Ronald L. and Diane L. Holley
Sam, Georgia and Sophia Rouman
Sharon Myers
Shelly and Mark Smith
Shepherd Bar and Restaurant
Sheri Alexander
Sheryl Miller
Stephen and Patricia Chase
Stephen McKnight
Steve and Sue Pung
STT Inc.
Teresa Brinati and Clay Wilson
Terry and Carol Libkuman
The Bee's Knees
Thomas and Diane Falsetta
Todd and Jennifer White
Tom and Denise Anthony
Tom and Gail Moore
Tom N. Tuma
Valerie L. Stephens, PhD
Virginia M. Judge
Wayne and Marty Goodman -
Northern Lights Energy
William and Joneil Cook
William Bellinger

Up to \$100

Alan and Sally Renner
Alex and Kristi Fuller Family
Amy and Phillip Vogel
Amy and Timothy Cooper
Andrea M. Plude
Ann and Larry Smith
Anna Gilbert
Annie and David Collins
Anonymous
Anonymous
Arielle, Mary and Dave Spence
Arthur and Marjorie Fountain
B. Lucille Wysong
Barb Steffke
Barbara B. Diehm
Barry and Lisa Galgoci
Bart and Denise Grisham
Becky Martin
Bernadette M. Stocking
Bernice R. Lopata
Beth Hovey
Beth Lewis Samuelson
Bill and Michelle Quackenbush
Bill and Nancy Whitehead and Family
Bill and Peg Sowle
Bill and Wanda Odykirk
Bob and Marie Lippert
Bob and Maurine Weisenburger
Bonnie and Clark Richards
Boy Scout Troop #610

Brad and Deb Fahr
Brad and Jeanette Murray
Bradley Packer
Brent and Vicki Duffett
Brook and Jody Payton
Bruce and Martha Goncer
Bruce Roscoe and Megan Goodwin
Caitlin Doyle
Calla J. Ringgenberg
Carlos and Shannon Deleon
Carmen K. Martin-Wolcott
Carol and Joseph O'Connell
Carol Faber
Carol Names
Caryn Mehler
Catherine Hollenbeck
Cathy Williams
Charles and Nancy Pisoni
Cheri L. Sjoberg
Cheryll Nordin
Chris and Carol Long/Jessie
and Janelle Nelson
Chris Bauerle and Susan Powers
Christa and Mark Clare
Christian, Gabrielle, Charles,
Tim and Lori Driessnack
Christine and David Lauria
Christopher A. Paton
Chuck and Janice Hubscher
Chuck Fitzpatrick
Chum and Ruth Utterback
Clyde and Deborah Drain
Craig and Lori Kreiner
Cynthia Read Miller
Dale and Mavelyn Cotter
Dan and Lisa Bergman
Dana and Howard Brophy
Daniel and Valerie Maloney
Daniel T. Kirchner
Dave and Helen MacGregor
Dave and Jean Abbott
Dave and Lois Arnold
Dave Johnson
David and Kathleen Rozga
David and Lorie Tuma and
Bert Palmer
David and Marlee Horrocks
David and Nancy Cantrell
David and Ruth Klaassen
David and Sherri Block
David B. Demski
David C. McMacken
David Gillespie
Dawn Rowley
Deb and Rodney Ervin
Deborah Dorn
Deloris Howard Pohl
Delphine Hearndon
Dennis and Michelle Ullrich
Diane and Fred Hatfield
Dick and Cindy Cooper
Dixie L. Neier
Dolores Lawrence
Don and Lisa Sytsema
Donal and Bonnie Bauder
Donald and Denise Middleton
Donald and Diane Thering
Donald and Dorothy Kullgren
Donna and Terry Lynch
Dorothy A. Steele
Doug and Dawn Haggart
Douglas Janes
Dr. Catherine McDevitt and
Dr. James Irvin
Duane and Teresa Feiss
Ed and Dorothy Howard
Ed Tuma Family
Eldon Frisch
Eleanor Moeggenberg

Elizabeth and David Alm
 Ellis M. Howard
 Elm Creek LTD
 Eric and Monique Albright
 Evelyn Cowden
 Evelyn Glanzer
 Floyd R. Reed
 Ford and Pamela Dingman
 Francis and Joy Blouin
 Gary and Dorothy Cole
 Gary and Mary Ann Mogg
 Gerry and Vickie Dillon
 Gordon and Rhonda Kohler
 Greg and Carole Merwin
 Heidi Opdycke
 Herb, Melinda and Ted Hartsook
 Howard Moeggenborg
 Imogene Pilarski
 Isabella County Sheriff Department
 J.E. and R.B. Lopata
 Jack and Mary Lou Westbrook
 Jack and Trudy Karr, Sherry and
 Jason Robinson
 James and Marian Sanford
 James and Sally Wojciechowski
 James and Sharon Thomas
 and Family
 James Eikrem and Elizabeth Richard
 Jan Sterling
 Jane and Jim Ogger
 Jane and Lew Johnson
 Jane Ouderkirk
 Janet D. Joslin
 Janet Prich
 Janine Janosky
 Jay and Shelli Watson
 Jay Kirchheimer
 Jay S. Rouman
 Jeanne and Armand Armstrong
 Jeanne Epple
 Jeff and Marie Natzel
 Jeff and Vicki Tuma
 Jeff M. Jackson
 Jeffery and Sharon Kuohn
 Jeffrey Thoenes and Isabel O'Hagin
 Jennifer R. Green
 Jennifer Shattuck
 Jerry and Kris Watters and Family
 Jessica J. Gardon Rose
 Jim and Alyce Gendregske
 Jim and Beth Conway
 Jim and Diane Damitio
 Jim and Jean Marie Madlo
 Jodi and Erik Robinette
 Joe and Charlotte Galgoci
 Joe and Jan Carroll
 Joel and Patricia Rockafellow
 John and Gretchen Weather
 John and Judy Williams
 John and Kathy Paparella
 John and Susan Coon
 John and Tanya Belcher
 John Fierst
 Joseph and Cheryl Brandell
 Joseph and Deborah Fox
 Joseph and Linda Heintz
 Joseph and Mary Bohrer
 Joshua and Sarah Hicks
 Joyce Riley
 Joyce Salisbury
 Judy Green
 Julia Hovey
 Julia Sauter
 Julie and Tim Warner
 Julie M. Recker
 Julie Maxon
 Justine K. Bergeron
 Kathryn Long
 Ken and Jan Hisey
 Ken and Sandy Snyder
 Ken Scheffel
 Kevin and Christy Dush

Kim and Bruce Bailey
 Krista Graham
 Kristi LaFleur
 Lake Huron Area Council Boy Scouts
 Langlois Management, LLC
 Larry and Lisa Tupica
 Larry and Lori Kula
 Laurie and Gregory House
 Laverty Family
 Lawrence and Sally Foote
 Leo Contrera
 Leone Weber
 Lexy McCulloch
 Lillian Falsetta
 Linda and Lewis Dawson
 Linda Bechtel
 Linda Stanford
 Lisa McGonegal-Smith
 Lorraine and Richard Yuskowatz
 Louise A. Plachta
 Louise Uphold
 Lowell and Ann Graham
 Lowell and Julie Sickles
 Lucile Prout
 Lynn and Audrey Laskowsky
 Marcy Kenny and Kay Love
 Margaret Arnold
 Mark and Bonnie Hearndon
 Mark and Debra Minelli
 Mark and Kathleen Mumford
 Mark and Laura Freed
 Mark and Pam Sroufe
 Mark and Robin Duthie
 Mark Daisy Family
 Mark Harvey
 Mark R. Kozlowski
 Mark, Kandace, Jerry
 and Alexander Ojeda
 Marty and Kelly Nelson
 Mary and Joel Wurl
 Mary and Michael Federspiel
 Mary and Rich Hill
 Mary Ann and Richard Monte
 Mary E. Meier
 Mary E. Welsh
 Mary Lou Schram
 Mary Lu and John Yardley
 Mary Mead
 Maryanke Alexander
 Matthew and Kimberly Vogel
 Maureen and John Ayre
 Michael A. and Maxine Klumpp Kent
 Michael and Mary Kattreh
 Michael and Sherry Cole
 Michael D. Lynch
 Michael Prenkert
 Michele M. Reinke
 Michele Sauter
 Mid Michigan Community College
 Midwest Archives Conference
 Mike and Fran Foust
 Mike and Jenni Lyon
 Mingsheng Dai and Ming Lu
 Mitch and Mary Endres
 Monica and Malcolm Fox
 Mr. and Mrs. Clarence Tuma
 Mr. and Mrs. Larry Anderson
 Nancy and Ken Sponseller
 Nancy Durfee
 Nancy Lux
 Nancy Ruth Barlett
 Norma and Connie Kreiner
 Norma English
 Norma I. Brien
 Nyle and Betty Haggart
 Pamela Burke
 Pat and Marvin Griffis
 Pat and Patty Zuker
 Pat Wilmot
 Pattie and Steve Faber
 Patty and Dave McNinch
 Paul and Kim Faber

Peggy A. Andersen
 Pete and Sheri Loubert
 Peter and Mary Obuchowski
 Rachel L. Campbell
 Ralph and Joan Baughman
 Randy and Cherie Dickinson
 Randy and Veronica Recker
 Randy Golden
 Raymond and Debra Goodwin
 Reid and Brenda Skeel
 Richard and Irene Schultz
 Richard and Jane Leroux Evans
 Richard and Rita Doneth
 Richard and Rosemary Thelen
 Rick and Mary Beth Roberts, Debra
 Jane and Mike Wagner, Dawn and
 Dave Farley
 Robert and Sandra Denton
 Robert and Thomas Murphy
 Robert and Vera Green
 Robert Utterback
 Robin and Greg Sabo
 Roger and Jeanne Lintemuth
 Roger and Pat Trudell
 Roger Coles
 Ron and Karen Gale
 Ronald and Linda Ruble
 Rose Cahoon
 Rui Wang
 Russell and Christine Alwood
 Ruth and Tom Moeggenberg
 Sally and Jack Weisenburger
 Sally Rose
 Scott and Deb Jelleberg
 Scott and Dawn Kerschner
 Scott and Elizabeth MacGregor
 Sharron Dodge
 Shepherd Women's Club
 Sherry L. Wentworth
 Shirley and Leonard Coombs
 Shirley T. Klein
 Stacey Graham
 Stanley and Peggy Martin
 Stephanie M. Mathson
 Steve and Marion Bradley
 Steve and Susan Kennedy
 Steve Hartzler
 Steven and Marla Schneide
 Stuart and Dona Bookey
 Sue and Mike Hovey
 Susan L. Zimmer
 Susan M. Stan
 Terri and Greg Moeggenberg
 Terry and Sherri Hutchins
 Terry Hutchison
 The Mahoney Family
 Thealana McConnell
 Theresa M. Bonneau
 Thomas and Celeste Grabowski
 Thomas and Diane Prenkert
 Thomas and Janet Pasche
 Thomas and Linda Powers
 Thomas and Suzanne Minns
 Thomas N. Gross
 Thomas S. Moore
 Tim and Emily Gross
 Tim and Sarah Watson
 Timothy and Lynda Smith
 Timothy and Sheree Hall
 Tina M. Powell, CPA
 Todd and Tracey Galgoci
 Tom and Nancy Ridley
 Tracey L. Sallee
 Tracy and Jane House
 Union Township Kids Little League
 Valerie Gerrard Browne
 Vera Welling
 Vickie and Steven Brown
 Virginia Blandford
 Vivian Como
 Waldo Sauter
 Wayne and Marie Osborn

Wendy A. Higgins
 Wilbur and Vilo Wiltse
 Will and Diane Thomas
 William Kennedy
 William T. Bulger
 Winnie Neal
 Zach and Jayne Fish

Permanently Endowed *Funds of the Foundation*

Gifts to the following funds will be invested, and the return on investments will be used to award grants and scholarships that benefit the residents of Isabella County...now and forever!

Unrestricted Funds:

The following endowed funds were established to make annual grants to charitable programs, services or projects that help address the ever-changing needs of Isabella County residents.

Mt. Pleasant Area Community Foundation
Unrestricted Fund
Bandit Industries Community Fund
Richard & Mary Barz Family Fund
Ralph & Sonja Baumgarth Family Fund
Barbara A. Bissot Fund
Bovee Family Fund
Fred Bradford Family Fund
Denison Unrestricted Fund
Kimber & Judy Dewitt Family Fund
Barbara L. & George W. Dunn Family Fund
Fabiano Family Fund
Ruth S. & Gerard R. Felter and
Florence F. Battenfeld Family Fund
Hersee Family Fund
Howard P. Himes Fund
G. Charles & Janice L. Hubscher Fund
Isabella Bank Director Memorial Fund
L.A. & Marilyn B. Johns Family Fund
David B. & Susan K. Keilitz Family Fund
Jane McNamara & Louise Williams Fund
Elizabeth Z. Miller & Bruce H. LaPointe
Community Needs Fund
Michael D. & Dianne C. Morey
Community Needs Fund
Jerry M. & Marilyn J. Morey Community Fund
Morning Sun Community Fund
John Neyer Family Fund
Rapaport Family Fund
Kay Smith Family Fund
W. Sidney Smith & Judith French Smith Fund
Theunissen Family Fund
Weisenburger Family Fund

Donor Advised Funds:

The following endowed funds were established to make grants according to the charitable interests of their founders.

Angel Wings Fund
Boge Family Fund
Darlene Bond Memorial Youth Fund
Tim & Teresa Coscarelly Family Fund
Joe & Jeanie Epple Family Fund
James Dale Ervin Memorial Fund
Foster Lifson Undiscovered Artists Fund
Gail E. Gorton Women in Sports Fund

John R. & Constance M. Harkins
Community Fund
Dyke & Phyllis Heinze Conservation Fund
LaBelle Family Fund
Lon Morey Family Fund
Susan Murray Family Fund
Optimist Club of Mt. Pleasant Fund
Ranck Family Fund
W. Sidney & Judith French Smith
Community Fund
Thomas R. & Judith D. Sullivan Fund
Harold & Milli Verleger Family Fund

Field of Interest Funds:

The following funds were established to target support at specific areas of community life as defined by their founders.

Access to Recreation Fund
John and Sue Bradac Family
Emergency Repair Fund
Mary Ellen Brandell Access to Recreation Fund
Brewster Family Access to Recreation Fund
Rollie Denison Leadership Institute Leadership
Enhancement Fund
Maynard Gilmore Family Youth Fund
Healthy Youth/Healthy Seniors Fund
Russ Herron Poetry Fund
Kellogg Youth Fund
Kiwanis Club of Mt. Pleasant Youth Fund
Robert & Geraldine Krapohl Literacy Fund
McCarthy Family Fund
Mt. Pleasant Rotary Club
Access to Recreation Fund
Rush Family Community Emergency Fund
Shepherd Community Fund
Janet Maar Strickler Access to Recreation Fund
Swimming Pool Fund
Women's Initiative Fund

Organization / Designated Funds:

The following funds were established by an organization, individual or family to support the operational, administrative and programming costs of their designated organizations.

Central Michigan Chapter of the
American Red Cross Fund
Charles E. Anthony Leadership Fund
Art Reach of Mid Michigan Fund
Beal City Public Schools
Education Foundation Fund
Richard Brandell and Joseph Sweeney
Recreation Fund
Breast and Cervical Cancer Fund
Friends of the Broadway Fund
William Ellis Brockman Infant Assistance Fund
Central Michigan Community Hospital Fund
Central Michigan Pregnancy Services –
Earn While You Learn Fund

Chippewa Watershed Conservancy Fund
 William Brehm Memorial Chippewa Watershed
 Conservancy Stewardship Fund
 Community Cancer Services Fund
 Continuum Homelessness Grant Fund
 Sally & John Goodrow Fund
 Michael D. and Dianne C. Morey HATS Fund
 William E. and Idonea Hersee House Fund
 Hospice of Central Michigan Fund
 Dick & Mary Ellen Brandell Family
 Hospice House Fund
 Bob & Jeanne Long Hospice House Fund
 Lon Morey Family Hospice House Fund
 Bill & Dolores Myler Hospice House Fund
 Dennis and Sandra Olson Hospice House Fund
 Jim & Naomi Stark Hospice House Fund
 Bill & Janet Maar Strickler Hospice House Fund
 Isabella Community Soup Kitchen Fund
 Isabella County Commission on Aging Fund
 Isabella County Fire Chiefs Association Fund
 Friends of the Library Fund
 Listening Ear Child Sexual Abuse
 Treatment Fund
 Listening Ear Consumer Needs & Dreams Fund
 Listening Ear Crisis Center Fund
 Ray & Georgia Martin Leadership Fund
 Martineau Community Recreation Center
 Operating Fund
 Pat and Jean McGuirk Family Fund
 Mid-Michigan Chapter of Safari Club
 International Fund
 Mid-Michigan Industries Fund
 Morey Foundation Leadership Fund
 Mt. Pleasant Area Community Foundation
 Leadership Fund
 Mt. Pleasant Discovery Museum Fund
 Mt. Pleasant Oil Industry Red Cross
 Food Pantry Fund
 Mt. Pleasant Oilers Athletic Boosters Fund
 Mt. Pleasant Public Schools Educational Fund
 Mt. Pleasant Public Schools Esther A. Kraus
 Peacemaking Fund
 Amy Otteman Nursing Education Fund
 Richards Leadership Fund
 Ridley Leadership Fund
 Rocket Football Operating Fund
 Schuster Family Fund for Listening Ear
 Special Olympics Michigan Fund
 United Way of Isabella County Fund
 U S Naval Sea Cadet Corp. –
 Chosin Division Fund
 Volunteer Center of Isabella County Fund
 Women's Aid Service Fund
 Youth Health and Fitness Fund

Scholarship Funds:

The following funds were established to provide scholarships and educational stipends in accordance with the guidelines set by the donors who established them.

Christopher John Andera Memorial
 Scholarship Fund
 Gregory Keith Baderschneider Scholarship Fund
 Matthew J. Boles Memorial Scholarship Fund
 Nancy Carey Memorial Scholarship Fund
 Joyce & Gerry Carter Scholarship Fund

Dr. Joyce Ann Carter Memorial Scholarship Fund
 Class of 2001 Scholarship Fund
 Donna J. & W. Larry Collins / GFWC
 Scholarship Fund
 Carolyn Cosan Memorial Scholarship Fund
 Denison Family Scholarship Fund
 Susan K. & Douglas E. Dodge Scholarship Fund
 C. Jane (Dubay) & Dwight D. Dodge
 Memorial Scholarship Fund
 Richard C. Dubay Memorial Scholarship Fund
 Governor John Engler Scholarship Fund
 Figure Skating Scholarship Fund
 Firstbank Scholarship Fund
 Ganiard History Project Scholarship Fund
 Goenner Family Scholarship Fund
 Emerson W. Green Memorial Scholarship Fund
 Earl G. Hartman, Sr. & Caroline Millar
 Hartman Scholarship Fund
 Jim Hartman Study Abroad Scholarship Fund
 Heydenburg Family Scholarship Fund
 James R. Hodgins Memorial Scholarship Fund
 Isabella Bank Scholarship Fund
 Isabella Community Credit Union
 Members' Scholarship Fund
 J. Paul Janes Memorial Scholarship Fund
 Robert A. & Catherine A. Janson
 Scholarship Fund
 John P. & Ann S. Jensen Scholarship Fund
 Dr. Thomas M. & Jayne Keating
 Scholarship Fund
 Harold & Marie Krapohl Scholarship Fund
 Lemmer Family Scholarship Fund
 Shirley Lemorie Memorial Scholarship Fund
 Maness Family Scholarship Fund
 Chris Maniteau Memorial Wrestling
 Scholarship Fund
 Martin Family Scholarship Fund
 Gary Moe Memorial Scholarship Fund
 Paul Moeggenberg Family Youth
 Agricultural Scholarship Fund
 Morning Sun Scholarship Fund
 Mt. Pleasant High School Class of 1959
 Legacy Scholarship Fund
 Mt. Pleasant High School Class of 1965
 Scholarship Fund
 Robert F. Murray & Co. CPA's
 Scholarship Fund
 Jason Parrott Scholarship Fund
 Jeff Reedy Memorial Scholarship Fund
 Rotary Scholarship Fund
 George & Francis P. Rouman Mental Health
 Education Scholarship Fund
 Kenneth & Hilda Schmeck Memorial
 Nursing Scholarship Fund
 Matthew S. Sharrar Memorial Scholarship Fund
 Shepherd Public Schools Scholarship Fund
 Nolan D. Stilgenbauer
 Agricultural Scholarship Fund
 Arnold & Margaret Sowmick Memorial
 Scholarship Fund
 supercarguy Scholarship Fund
 Harry E. Tope Memorial Aviation
 Scholarship Fund
 Jeffrey Vernon Scholarship Fund
 Kristopher Walden "Waldo" Arts
 Scholarship Fund
 Bruce William Wood Scholarship Fund

Honorary Chairs

*Olga Denison**

*Kay A. Smith**

Sally Weisenburger

** deceased*

*Women's Initiative
Committee
Co-Chairs*

Judy F. Smith

Darcy Orlik

*Women's Initiative
Committee*

Mary Louise Baker

Carol Burdette

Joneil Cook

Carmelina Crisci

Cheryl Gaudard

Joanne Golden

Julayne Goward

Janelle Joslin

Dorine Lilly

Lori Maney

Julie McGuirk

Dana Moore

Diane Phillips

Jeri Reid

Jill Simons

Jan Strickler

Cindi Verwey

Jennifer White

Terrie Zitzelsberger



Look Who's TALKING

Women's Initiative Speaker Series

Who: Dan and Jennifer Digmann

What: Annual Speaker Series Luncheon

When: Wednesday, November 3, 2010
11:30am-1:30pm

Where: The Comfort Inn Conference Center

Why: The "Look Who's Talking" Speaker Series features speakers focusing on topics of interest and celebrates the accomplishments of the Mt. Pleasant Area Community Foundation's Women's Initiative.

Tickets: \$35 each

Movie writers would never dream up a fairytale of two people with multiple sclerosis falling in love and living happily ever after. But Dan and Jennifer Digmann of Mt. Pleasant have been living this truest of love stories as a married couple since 2005.

Combined, they have taken on this chronic illness for more than 20 years. Jennifer was diagnosed in 1997; Dan was diagnosed in 2000. She has secondary-progressive MS; his is relapsing-remitting.

Dan and Jennifer have gone on to inspire others with their amazing love story and passion for life.

Last year the National MS Society Michigan Chapter honored them with its MS Achievement Award, recognizing their efforts to increase MS awareness, improve their lives and the lives of others, and to motivate others through their positive, yet realistic, way of dealing with adversity.

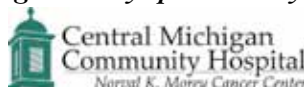
Earlier this year they testified before a Michigan Senate Subcommittee about the MI Choice Medicaid Waiver Program, which provides Jennifer the in-home care she needs while Dan works at CMU.

They share their stories through local and national publications, their blog - www.danandjenniferdigmann.com - and have presented at events such as the Michigan Story Festival and the Region VII Area Agency on Aging annual meeting.



JENNIFER & DAN DIGMANN

Keynote speakers generously sponsored by:



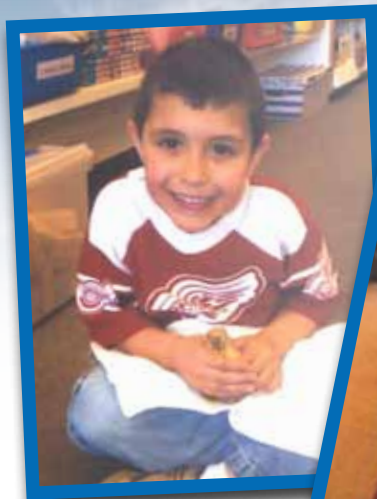
Facts about the Women's Initiative:

- The Women's Initiative, an endowed fund at the Mt. Pleasant Area Community Foundation, provides for the needs of women and girls of Isabella County.
- Grants have previously been awarded to Women's Aid Service, Child and Family Enrichment Council, the Salvation Army and the Pardee Cancer Center.
- You can support this endowed fund by filling out a pledge card, serving on its committees, or by attending the "Look Who's Talking" Speaker Series luncheons or Kay's Day scheduled for June. This event, inspired by Kay Krapohl Smith, celebrates the philanthropic interests of our community's women.

To purchase tickets call MPACF at (989) 773-7322 by 10/27/2010.

Grants Awarded through Endowed Funds

August 2009 – July 2010



Grants from Unrestricted Funds:

American Red Cross, Central Michigan Chapter

Emergency Food Pantry for
Isabella County..... \$1,000

Chippewa River District Library System

Rosebush Library
Programming Technology \$1,000

Hospice of Central Michigan

Woodland Hospice Benevolence Fund \$1,385

Bandit Industries Community Fund, Bovee Family Fund, Ruth S. & Gerard R. Felter and Florence F. Battenfeld Family Fund, Morning Sun Community Fund, Denison Unrestricted Fund, Barbara L. and George W. Dunn Family Fund, Fabiano Family Fund, Hersee Family Fund, G. Charles and Janice L. Hubscher Fund, Isabella Bank Director Memorial Fund, David B. and Susan K. Keilitz Family Fund, Elizabeth Z. Miller and Bruce H. LaPointe Community Needs Fund, Jerry M. and Marilyn A. Morey Community Fund, Michael D. and Dianne C. Morey Community Needs Fund, W. Sidney and Judith French Smith Family Fund & Weisenburger Family Fund

Association for Interfaith Ministries

Camp Miniwanca Weekend Retreat \$1,000
Jane McNamara and Louise Williams Fund

Friends of the Broadway

Broadway Theatre
Poetry Contest 2010 \$850
Jerry M. and Marilyn A. Morey Community Fund

Grants from Field of Interest Funds:

City of Mt. Pleasant

Access Adventure Trail Project..... \$200,000
Access to Recreation Fund

Chippewa Watershed Conservancy

Conservation Easement
Monitoring and Preserve Stewardship..... \$1,457
Chippewa Watershed Conservancy Fund & William Brehm
Memorial Chippewa Watershed Conservancy Stewardship Fund

Isabella County Commission on Aging

Volunteer Mileage
for Gold Key Volunteer Program \$2,500
Healthy Youth/Healthy Seniors Fund &
Unrestricted Funds listed above

Art Reach of Mid Michigan

Wellspring Literary Series \$1,400
Russ Herron Poetry Fund

Chippewa River District Library System

Children's Literacy Playspaces \$1,994
Kellogg Youth Fund & Robert and
Geraldine Krapohl Literacy Fund

Gratiot Isabella RESD

Early Literacy Initiative \$6,945
Kellogg Youth Fund & Robert and
Geraldine Krapohl Literacy Fund

Isabella County Department of Human Services

Donation Pantry -
Protective Services and Foster Care \$750
Kellogg Youth Fund

The Baptist Children's Home

Water Conservation/
Harvesting System \$1,288
Kellogg Youth Fund

Beal City Public Schools

Project Pals \$300
Kellogg Youth Fund

Child & Family Enrichment Council

Darkness to Light..... \$508
Kellogg Youth Fund



Isabella County 4-H Program Council

Food Stand Renovation Project..... \$4,000
Kellogg Youth Fund

Mt. Pleasant Discovery Museum

The Magnetic Field Exhibit \$2,500
Kellogg Youth Fund

Mt. Pleasant Public Schools

Matinee Grants \$904
Kellogg Youth Fund

The Salvation Army

Youth Beginner's Band \$1,000
Kellogg Youth Fund

Shepherd Public Schools

"I Read It! I Saw It! I Love It!" -

Media Center Program \$300
Kellogg Youth Fund

Friends of the Broadway

Greg Lester's Puppet Adventures \$300
Kellogg Youth Fund

Beal City Public Schools

For the Eggscitement of Eggs \$200
Kellogg Youth Fund

Renaissance Public School Academy

Expanding Expression \$276
Kellogg Youth Fund

Saint Joseph the Worker School

Chautauqua Express Musical Program/
World Music Tour \$300
Kellogg Youth Fund

Central Michigan Pregnancy Services

The Power of Choice -Brian Pruitt,
Motivational Speaker \$3,600
Kellogg Youth Fund

HopeWell Ranch

12 X 30 Cabin \$2,000
Kellogg Youth Fund

Central Michigan University

Chippewa River Writing Camp \$300
Kellogg Youth Fund

Isabella County MSU Extension

Healthier Kids for Isabella County
with OrganWise Guys Teaching Tools \$300
Kellogg Youth Fund

Mt. Pleasant High School

Senior Class After Prom Activities \$300
Kellogg Youth Fund

Shepherd High School

After Prom Lock-In \$300
Kellogg Youth Fund

Central Michigan University

Super Saturday Program \$2,000
Kellogg Youth Fund

Hospice of Central Michigan

Children's Bereavement Supplies \$1,000
Kellogg Youth Fund

Mt. Pleasant Discovery Museum

Music Exhibit/
Playground Musical Instruments \$3,500
Kellogg Youth Fund

Oasis Alternative High School

BLAIR \$300
Kellogg Youth Fund

Muscular Dystrophy Association

Summer Camp \$640
Kellogg Youth Fund

Winn Area Activity Center

Summer Cultural Field Trips \$1,250
Shepherd Community Fund & Kellogg Youth Fund

Village of Shepherd

Community Policing \$597
Shepherd Community Fund

St. Vincent De Paul Parish

Bethlehem Walk \$219
Shepherd Community Fund

**Shepherd Public Schools**

Journey Back in Time 2010 \$500
Shepherd Community Fund

Shepherd Public Schools

Youth Football
Program Start Up \$1,500
Shepherd Community Fund

Pardee Cancer Treatment Fund of Isabella County

Women's Cancer Treatment
and Prescription \$1,200
Women's Initiative Fund

Grants from Organization/Designated Funds:**American Red Cross, Central Michigan Chapter**

Red Cross Pantry for Infant Items \$839
William Ellis Brockman Infant Assistance Fund

Listening Ear

Consumer Needs and Dreams Program \$200
Listening Ear Consumer Needs and Dreams Fund

American Red Cross, Central Michigan Chapter

Food Pantry \$429
Mt. Pleasant Oil Industry Red Cross Food Pantry Fund

Mt. Pleasant Public Schools

Peacemaking Ceremony \$472
Mt. Pleasant Public Schools Esther A. Kraus Peacemaking Fund

United Way of Isabella County

Volunteer Center of Isabella County \$3,443
Volunteer Center of Isabella County Fund

Beal City Rocket Football

Rocket Football Program \$1,000
Rocket Football Operating Fund

Mt. Pleasant Rocket Football

Rocket Football Program \$1,500
Rocket Football Operating Fund

Grant from Donor Advised Fund:**Mt. Pleasant Oilers Athletic Boosters**

Girls Soccer Team Camp \$2,695
Gail E. Gorton Women in Sports Fund

GIFT / PLEDGE CARD

A gift to an endowed fund administered by the Mt. Pleasant Area Community Foundation is a wonderful way to support a charitable organization or cause in our community...now and forever.

Name of Fund: _____ or _____ **Unrestricted Gift**

☐ Enclosed is my gift of \$ _____

Please make checks payable to:
Mt. Pleasant Area Community Foundation
or MPACF

☐ I pledge \$ _____ in each of the years checked below:

____ 2010 ____ 2011 ____ 2012 ____ 2013 ____ 2014

(Pledge reminders will be sent in November of each year.)

Thank You!

This gift is being made:

____ In honor of

____ In memory of

Name: _____

Name: _____

Address: _____

City: _____ State: _____ Zip: _____

Please return to:
MPACF
P.O. Box 1283
Mt. Pleasant, MI 48804-1283

Please notify the following person that a gift has been made:

Name: _____

Address: _____

City/State/Zip: _____

TAX INFORMATION

Federal Tax Deduction and a State of Michigan Tax Credit.

Current legislation provides a tax credit which may reduce your State of Michigan income tax liability by one-half of the amount of the donation made to the Mt. Pleasant Area Community Foundation for permanent endowment in any fund, subject to limits based on filing status.

- For single individuals or married taxpayers filing separately, the maximum credit is \$100 (for gifts of \$200 or more).
- For married couples filing jointly, the maximum credit is \$200 (for gifts of \$400 or more).
- For corporations and others which pay the Michigan Business Tax, the maximum credit is \$5,000 or 5% of the tax liability before claiming any credits, whichever is less.
- For a resident estate or trust, the maximum credit is \$5,000 or 10% of the tax liability before claiming any credits, whichever is less.

The credit is in addition to those available for donations to Michigan colleges and universities, public libraries and public broadcasting stations, or Michigan homeless shelters and food banks.

A donation made is also deductible as a charitable gift for federal income tax purposes.

Examples of the tax benefits:

	Individual	Married	Corporation
Amount of Gift	\$200	\$400	\$10,000
State Tax Credit	\$100	\$200	\$5,000
Federal Tax Rate	29%	25%	34%
Federal Tax Savings	\$58	\$100	\$3,400
Total Tax Savings	\$158	\$300	\$6,700
Actual Cost of Gift	\$42	\$100	\$3,300

Thank You to Our Sponsors:



Jack Harkins

William & Eleanor Martin

Michael & Dianne Morey



MEMBER FDIC



Muskegon Development Company



Certified Public Accountants



ROBERT F. MURRAY AND COMPANY
CERTIFIED PUBLIC ACCOUNTANTS AND FINANCIAL ADVISORS
OFFICES IN MT. PLEASANT & MIDLAND



Anonymous

Sue & Doug Dodge

Dave & Sue Keilitz

Tom & Judi Sullivan

Schuster Consulting

